

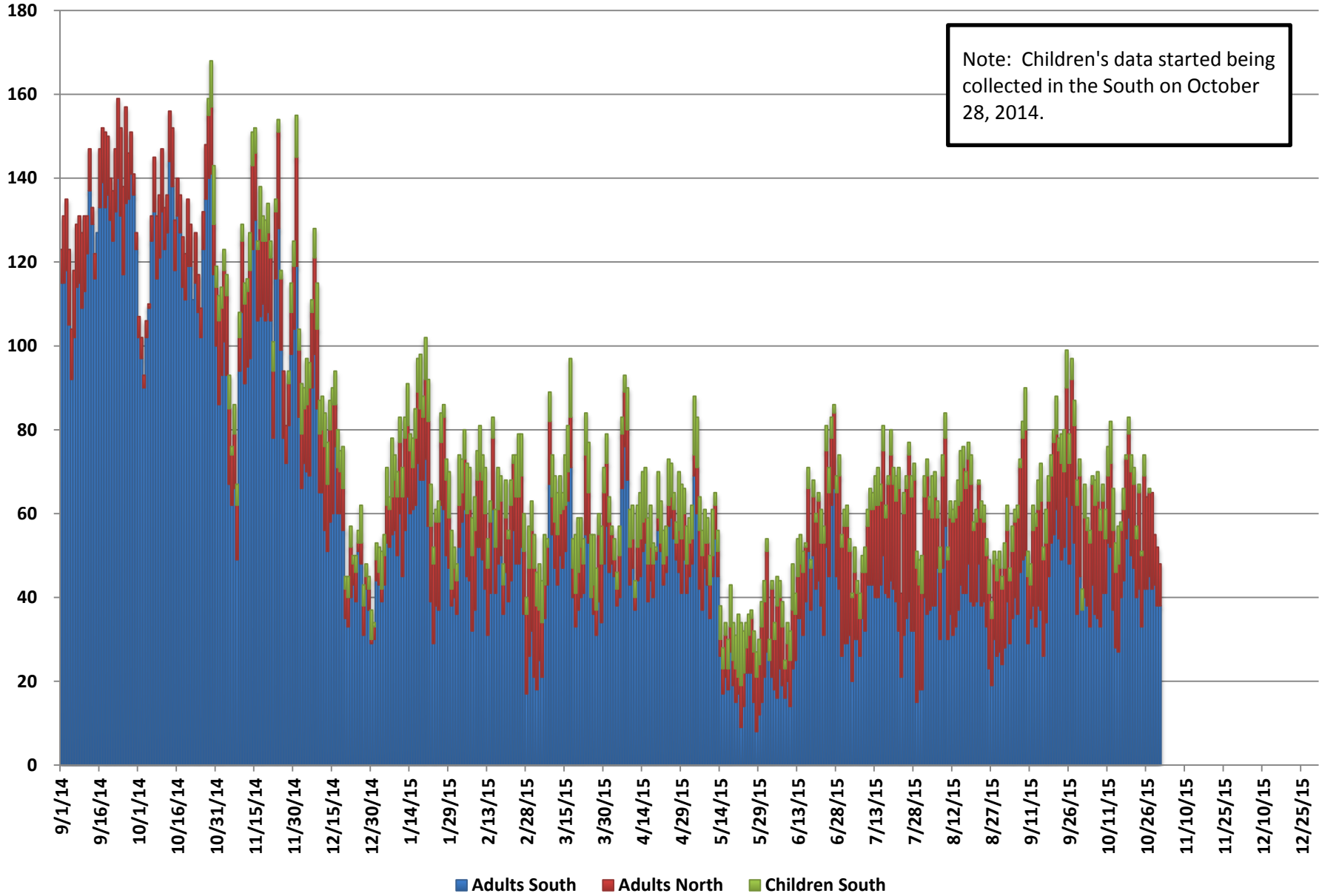
# Behavioral Health Chart Pack

---

November 2015

# Individuals Waiting in Emergency Rooms for Behavioral Health Services

Note: Children's data started being collected in the South on October 28, 2014.

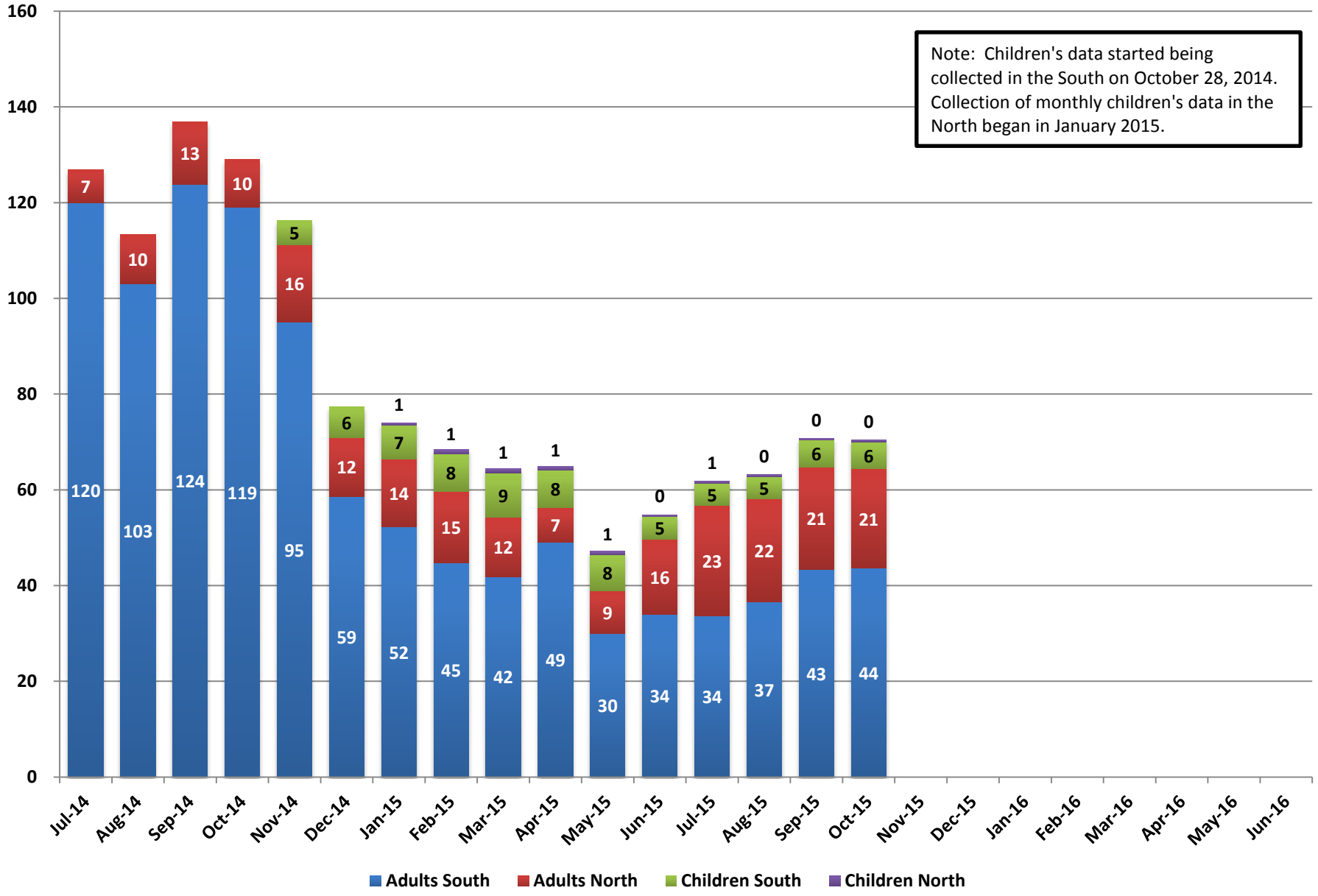


## Individuals Waiting in Emergency Rooms for Behavioral Health Services

	Adults South	Adults North	Children South	Total
10/1/2015	37	0	5	42
10/2/2015	40	19	8	67
10/3/2015	38	18	3	59
10/4/2015	33	20	3	56
10/5/2015	43	24	2	69
10/6/2015	36	26	6	68
10/7/2015	35	28	7	70
10/8/2015	33	23	5	61
10/9/2015	41	22	4	67
10/10/2015	41	13	7	61
10/11/2015	53	16	7	76
10/12/2015	52	20	10	82
10/13/2015	37	19	10	66
10/14/2015	28	18	7	53
10/15/2015	27	21	9	57
10/16/2015	40	16	2	58
10/17/2015	44	17	5	66
10/18/2015	54	19	1	74
10/19/2015	59	20	4	83
10/20/2015	50	20	4	74
10/21/2015	47	20	4	71
10/22/2015	40	14	3	57
10/23/2015	42	23	2	67
10/24/2015	33	17	1	51
10/25/2015	42	27	5	74
10/26/2015	42	22	0	64
10/27/2015	45	20	1	66
10/28/2015	42	23	0	65
10/29/2015	43	12	0	55
10/30/2015	38	14	0	52
10/31/2015	38	10	0	48

## Individuals Waiting in Emergency Rooms for Behavioral Health Services - Monthly Average

Note: Children's data started being collected in the South on October 28, 2014. Collection of monthly children's data in the North began in January 2015.



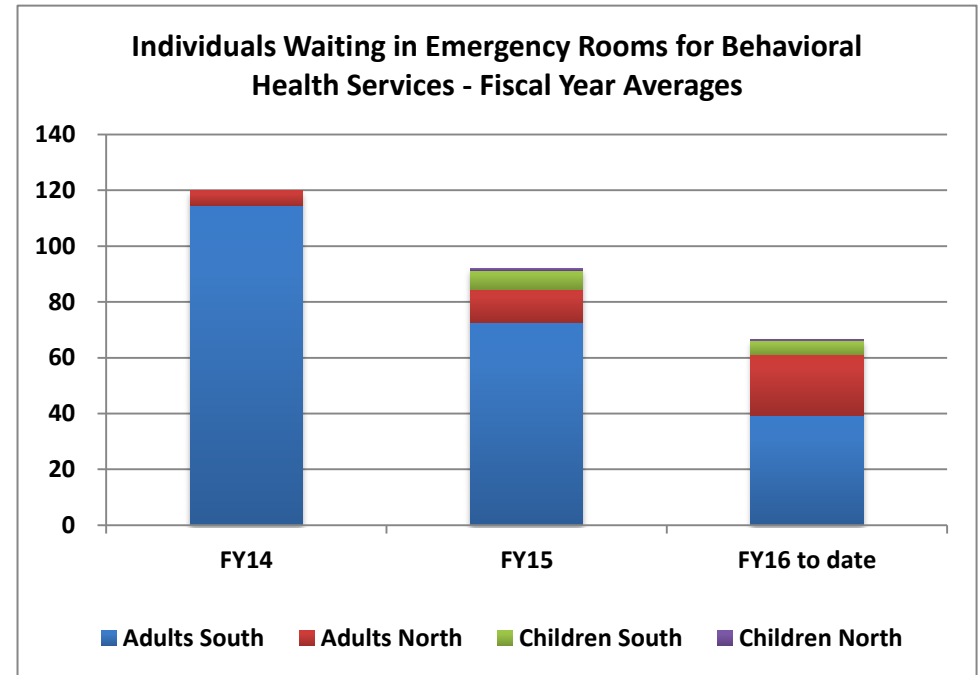
## Individuals Waiting in Emergency Rooms for Behavioral Health Services

### Monthly Average

	Adults South	Adults North	Children South	Children North	Total
Jul-14	120	7			127
Aug-14	103	10			113
Sep-14	124	13			137
Oct-14	119	10			129
Nov-14	95	16	5		116
Dec-14	59	12	6		77
Jan-15	52	14	7	1	74
Feb-15	45	15	8	1	69
Mar-15	42	12	9	1	64
Apr-15	49	7	8	1	65
May-15	30	9	8	1	47
Jun-15	34	16	5	0	55
Jul-15	34	23	5	1	62
Aug-15	37	22	5	0	63
Sep-15	43	21	6	0	71
Oct-15	44	21	6	0	70
Nov-15					
Dec-15					
Jan-16					
Feb-16					
Mar-16					
Apr-16					
May-16					
Jun-16					

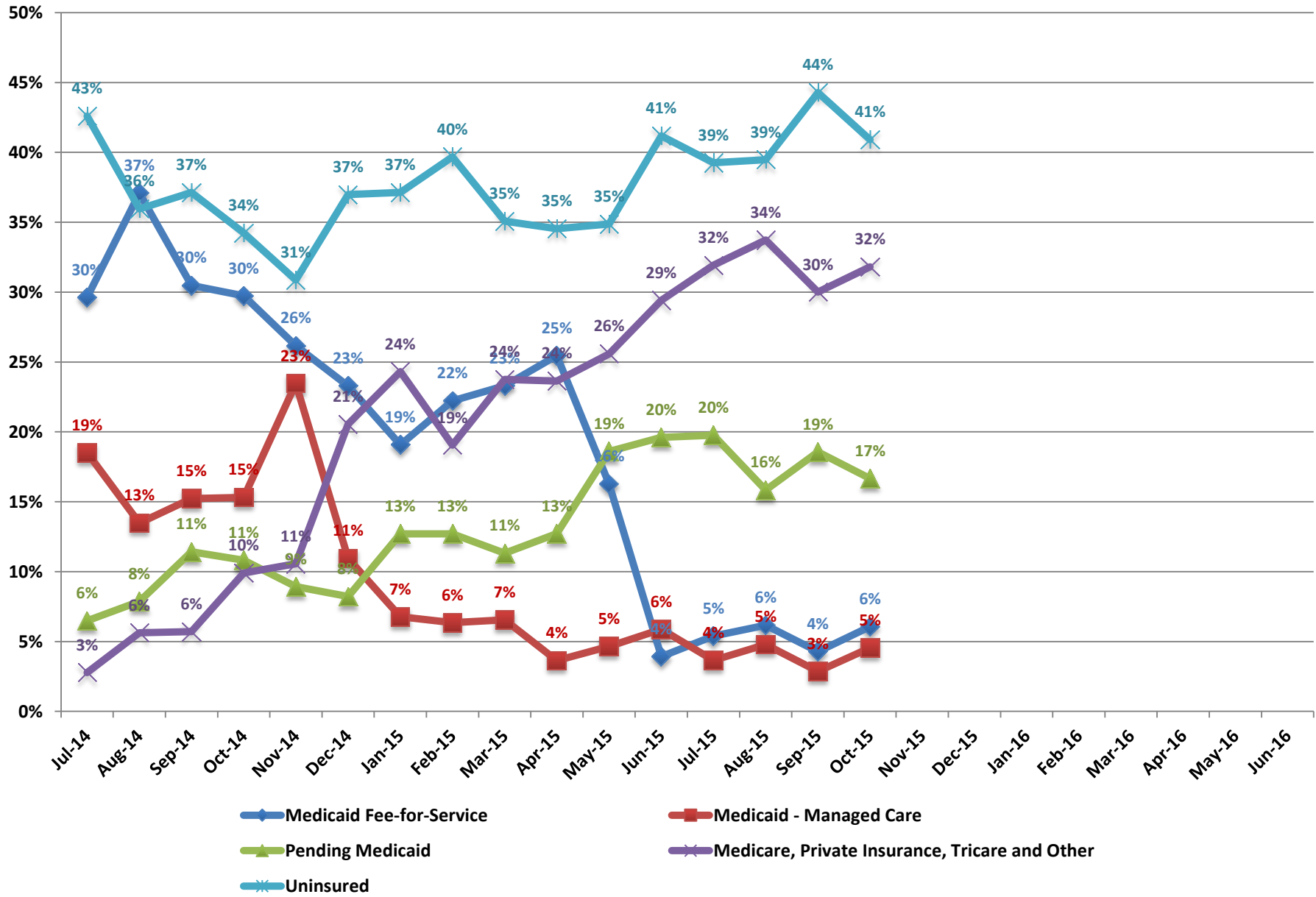
### Fiscal Year Averages

Fiscal Year	Adults South	Adults North	Children South	Children North	Total	Percent Change
FY14	115	5			119	
FY15	73	12	7	1	89	-25%
FY16 to date	39	22	5	0	67	-26%



*Note: Adult data in the North began being collected consistently in September 2013. Children's data started being collected in the South on October 28, 2014. Collection of monthly children's data in the North began January 2015.*

## Insurance Status of Adults Waiting in Emergency Rooms for Behavioral Health Services



### Insurance Status of Adults Waiting in Emergency Rooms for Behavioral Health Services (Monthly Average)

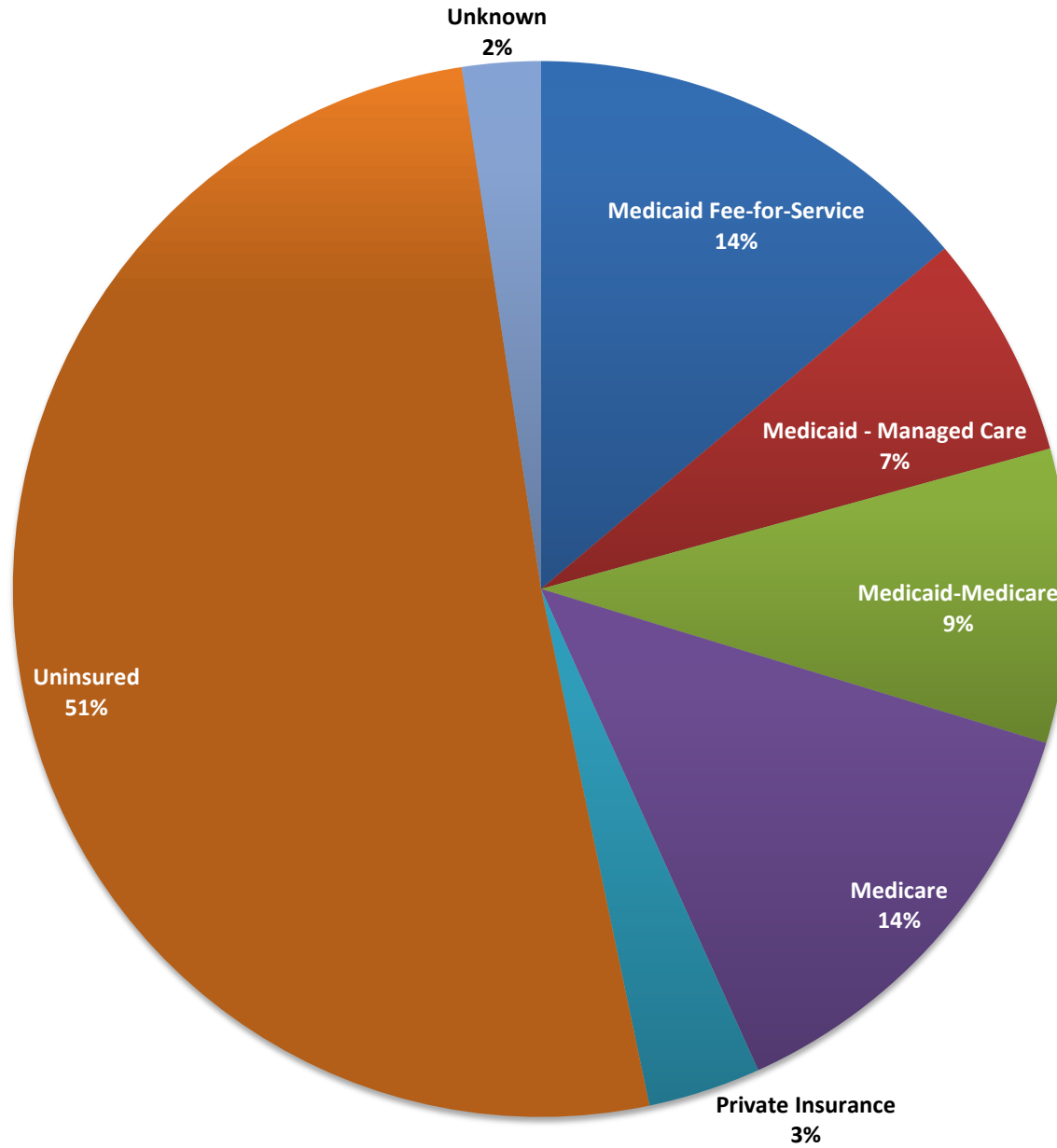
	Medicaid Fee-for-Service		Medicaid - Managed Care		Pending Medicaid		Medicare		Private Insurance		Tricare (Military)		Other		Uninsured	
	Number	Percent	Number	Percent	Number	Percent	Number	Percent	Number	Percent	Number	Percent	Number	Percent	Number	Percent
Jul-14	32	30%	20	19%	7	6%	2	2%	1	1%	0	0%	0	0%	46	43%
Aug-14	33	37%	12	13%	7	8%	3	3%	1	1%	1	1%	0	0%	32	36%
Sep-14	32	30%	16	15%	12	11%	5	5%	1	1%	0	0%	0	0%	39	37%
Oct-14	33	30%	17	15%	12	11%	6	5%	4	4%	1	1%	0	0%	38	34%
Nov-14	29	26%	26	23%	10	9%	8	7%	1	1%	0	0%	3	3%	34	31%
Dec-14	17	23%	8	11%	6	8%	7	10%	2	3%	0	0%	6	8%	27	37%
Jan-15	14	19%	5	7%	9	13%	6	8%	1	1%	0	0%	11	15%	27	37%
Feb-15	14	22%	4	6%	8	13%	4	6%	1	2%	0	0%	7	11%	25	40%
Mar-15	14	23%	4	7%	7	11%	5	8%	1	2%	0	0%	8	14%	20	35%
Apr-15	14	25%	2	4%	7	13%	4	7%	1	2%	0	0%	8	15%	19	35%
May-15	7	16%	2	5%	8	19%	4	9%	0	0%	0	0%	7	16%	15	35%
Jun-15	2	4%	3	6%	10	20%	5	10%	1	2%	0	0%	9	18%	21	41%
Jul-15	3	5%	2	4%	12	20%	6	9%	1	2%	0	0%	12	20%	24	39%
Aug-15	4	6%	3	5%	10	16%	4	7%	1	2%	0	0%	15	25%	24	39%
Sep-15	3	4%	2	3%	13	19%	4	6%	0	0%	0	0%	17	24%	31	44%
Oct-15	4	6%	3	5%	11	17%	6	9%	1	2%	0	0%	14	21%	27	41%
Nov-15																
Dec-15																
Jan-16																
Feb-16																
Mar-16																
Apr-16																
May-16																
Jun-16																

Note: This is the average for the month of the daily counts of individuals in each category.

#### Fiscal Year Averages

Insurance Status	FY15	FY16 to date
Medicaid Fee-for-Service	24%	5%
Medicaid - Managed Care	11%	4%
Pending Medicaid	12%	18%
Medicare	7%	8%
Private Insurance	2%	1%
Tricare (Military)	0%	0%
Other	8%	23%
Uninsured	37%	41%

## Insurance Status of Inpatient Clients - Statewide, FY16 to date





**Insurance Status of Adult Inpatient Clients (Monthly Average)**

**DINI-TOWNSEND (NORTH)**

	Medicaid Fee-for-Service	Medicaid - Managed Care	Medicaid-Medicare	Medicare	Private Insurance	Uninsured	Unknown
Oct-14	8%	23%	15%	8%	0%	42%	4%
Nov-14	36%	25%	8%	9%	1%	21%	0%
Dec-14	18%	24%	16%	14%	0%	27%	1%
Jan-15	27%	12%	10%	14%	1%	33%	3%
Feb-15	20%	6%	3%	23%	5%	43%	1%
Mar-15	21%	13%	0%	23%	7%	34%	2%
Apr-15	29%	8%	19%	9%	2%	34%	0%
May-15	30%	9%	13%	17%	11%	20%	0%
Jun-15	30%	9%	21%	16%	5%	18%	0%
Jul-15	34%	10%	7%	21%	3%	24%	0%
Aug-15	35%	8%	14%	11%	5%	25%	2%
Sep-15	35%	14%	14%	17%	7%	13%	0%
Oct-15	35%	10%	16%	13%	6%	21%	0%
Nov-15							
Dec-15							
Jan-16							
Feb-16							
Mar-16							
Apr-16							
May-16							
Jun-16							

**RAWSON-NEAL (SOUTH)**

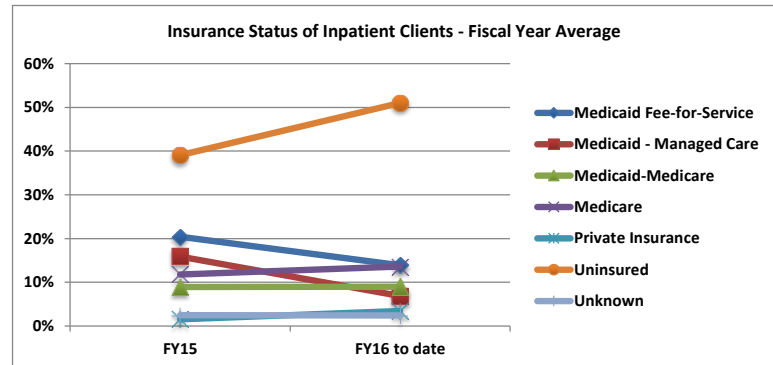
	Medicaid Fee-for-Service	Medicaid - Managed Care	Medicaid-Medicare	Medicare	Private Insurance	Uninsured	Unknown
Oct-14	19%	29%	5%	11%	1%	32%	4%
Nov-14	21%	31%	6%	8%	0%	30%	4%
Dec-14	13%	20%	23%	4%	1%	37%	3%
Jan-15	22%	15%	9%	10%	1%	41%	2%
Feb-15	23%	11%	11%	11%	1%	40%	2%
Mar-15	23%	8%	10%	13%	1%	41%	3%
Apr-15	25%	8%	13%	8%	2%	43%	2%
May-15	19%	6%	10%	14%	2%	47%	3%
Jun-15	9%	6%	10%	14%	2%	55%	2%
Jul-15	8%	6%	10%	6%	6%	58%	6%
Aug-15	9%	5%	9%	15%	3%	55%	4%
Sep-15	11%	7%	6%	14%	2%	58%	1%
Oct-15	10%	6%	7%	18%	2%	57%	0%
Nov-15							
Dec-15							
Jan-16							
Feb-16							
Mar-16							
Apr-16							
May-16							
Jun-16							

**STATEWIDE**

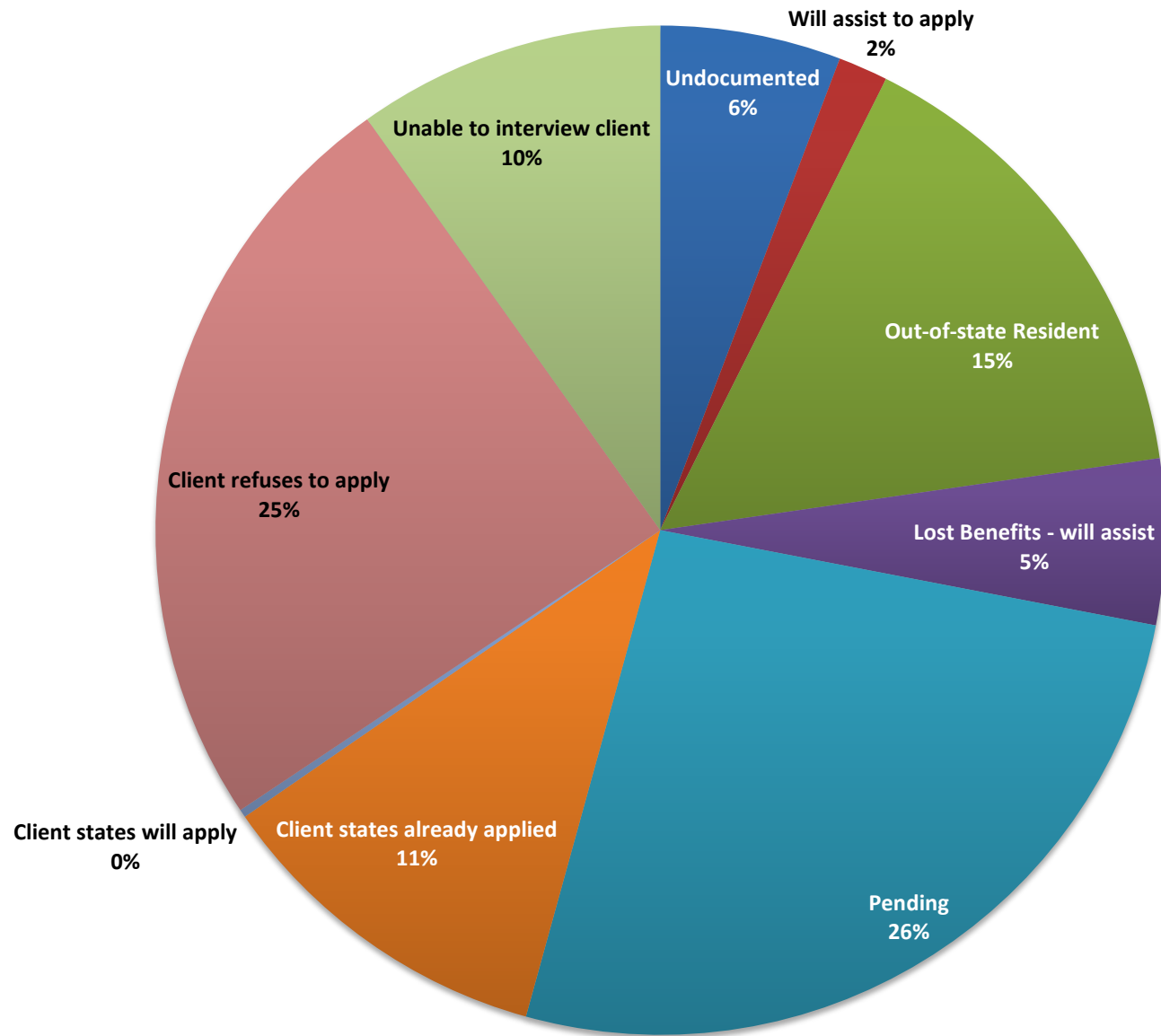
	Medicaid Fee-for-Service	Medicaid - Managed Care	Medicaid-Medicare	Medicare	Private Insurance	Uninsured	Unknown
Oct-14	17%	28%	6%	11%	0%	33%	4%
Nov-14	22%	30%	7%	8%	0%	29%	3%
Dec-14	17%	30%	3%	14%	0%	35%	1%
Jan-15	22%	14%	9%	10%	1%	40%	2%
Feb-15	23%	11%	10%	12%	2%	40%	2%
Mar-15	23%	9%	9%	14%	2%	40%	3%
Apr-15	25%	8%	13%	8%	2%	42%	2%
May-15	20%	6%	11%	14%	3%	43%	2%
Jun-15	13%	7%	12%	14%	3%	49%	2%
Jul-15	13%	7%	10%	9%	5%	52%	5%
Aug-15	13%	5%	10%	14%	3%	51%	4%
Sep-15	15%	8%	8%	14%	3%	51%	1%
Oct-15	14%	7%	9%	17%	3%	51%	0%
Nov-15							
Dec-15							
Jan-16							
Feb-16							
Mar-16							
Apr-16							
May-16							
Jun-16							

**Fiscal Year Average**

Fiscal Year	Medicaid Fee-for-Service	Medicaid - Managed Care	Medicaid-Medicare	Medicare	Private Insurance	Uninsured	Unknown
FY15	20%	16%	9%	12%	2%	39%	2%
FY16 to date	14%	7%	9%	14%	3%	51%	2%



### Reason Uninsured for Adult Inpatient Clients - Statewide, FY16 to date



**Uninsured Reason for Adult Inpatient Clients (Monthly Average)**

**DINI-TOWNSEND (NORTH)**

	Undocu-mented	Will assist to apply	Out-of-state Resident	Lost Benefits - will assist	Pending	Client states already applied	Client states will apply	Client refuses to apply	Unable to interview client
Nov-14	10%	30%	0%	21%	10%	0%	0%	0%	30%
Dec-14	0%	45%	15%	6%	7%	0%	0%	3%	25%
Jan-15	0%	73%	8%	8%	0%	0%	0%	12%	0%
Feb-15	9%	42%	9%	2%	8%	6%	15%	2%	8%
Mar-15	0%	27%	13%	3%	27%	9%	0%	6%	16%
Apr-15	0%	51%	13%	7%	27%	0%	0%	0%	2%
May-15	0%	27%	9%	0%	36%	0%	0%	9%	18%
Jun-15	0%	60%	10%	0%	0%	0%	10%	20%	0%
Jul-15	0%	43%	0%	0%	43%	0%	0%	14%	0%
Aug-15	0%	15%	26%	0%	41%	0%	0%	15%	4%
Sep-15	0%	36%	0%	0%	0%	0%	7%	7%	50%
Oct-15	0%	4%	0%	0%	0%	0%	0%	18%	79%
Nov-15									
Dec-15									
Jan-16									
Feb-16									
Mar-16									
Apr-16									
May-16									
Jun-16									

**RAWSON-NEAL (SOUTH)**

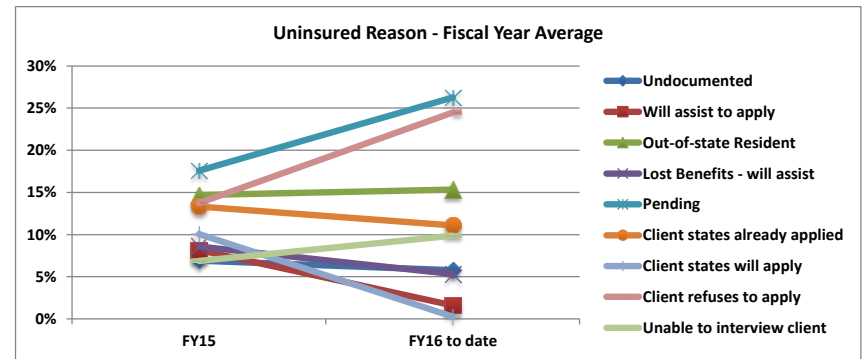
	Undocu-mented	Will assist to apply	Out-of-state Resident	Lost Benefits - will assist	Pending	Client states already applied	Client states will apply	Client refuses to apply	Unable to interview client
Nov-14	10%	7%	23%	16%	0%	16%	10%	7%	10%
Dec-14	12%	11%	16%	10%	4%	17%	15%	7%	7%
Jan-15	10%	9%	15%	7%	3%	17%	22%	10%	7%
Feb-15	5%	7%	15%	11%	8%	13%	27%	10%	5%
Mar-15	5%	3%	12%	9%	18%	15%	14%	17%	6%
Apr-15	5%	1%	11%	6%	38%	8%	2%	21%	8%
May-15	6%	0%	12%	5%	33%	14%	0%	23%	6%
Jun-15	4%	0%	9%	7%	37%	14%	0%	22%	6%
Jul-15	5%	0%	14%	10%	25%	13%	0%	25%	9%
Aug-15	8%	0%	12%	7%	28%	12%	0%	25%	9%
Sep-15	5%	0%	18%	3%	30%	12%	0%	27%	6%
Oct-15	7%	0%	20%	3%	23%	12%	1%	24%	10%
Nov-15									
Dec-15									
Jan-16									
Feb-16									
Mar-16									
Apr-16									
May-16									
Jun-16									

**STATEWIDE**

	Undocu-mented	Will assist to apply	Out-of-state Resident	Lost Benefits - will assist	Pending	Client states already applied	Client states will apply	Client refuses to apply	Unable to interview client
Nov-14	10%	9%	21%	16%	1%	15%	9%	6%	12%
Dec-14	11%	11%	24%	9%	5%	17%	12%	7%	5%
Jan-15	9%	16%	15%	7%	3%	15%	19%	10%	6%
Feb-15	6%	14%	14%	9%	8%	11%	25%	8%	5%
Mar-15	5%	5%	12%	8%	19%	15%	13%	16%	7%
Apr-15	5%	6%	12%	6%	37%	7%	1%	18%	7%
May-15	6%	2%	12%	5%	33%	13%	0%	23%	7%
Jun-15	4%	3%	9%	7%	35%	13%	1%	22%	6%
Jul-15	5%	3%	13%	9%	26%	11%	0%	24%	8%
Aug-15	7%	1%	13%	6%	29%	11%	0%	24%	9%
Sep-15	5%	1%	17%	3%	28%	11%	0%	26%	8%
Oct-15	6%	0%	19%	3%	22%	11%	1%	24%	14%
Nov-15									
Dec-15									
Jan-16									
Feb-16									
Mar-16									
Apr-16									
May-16									
Jun-16									

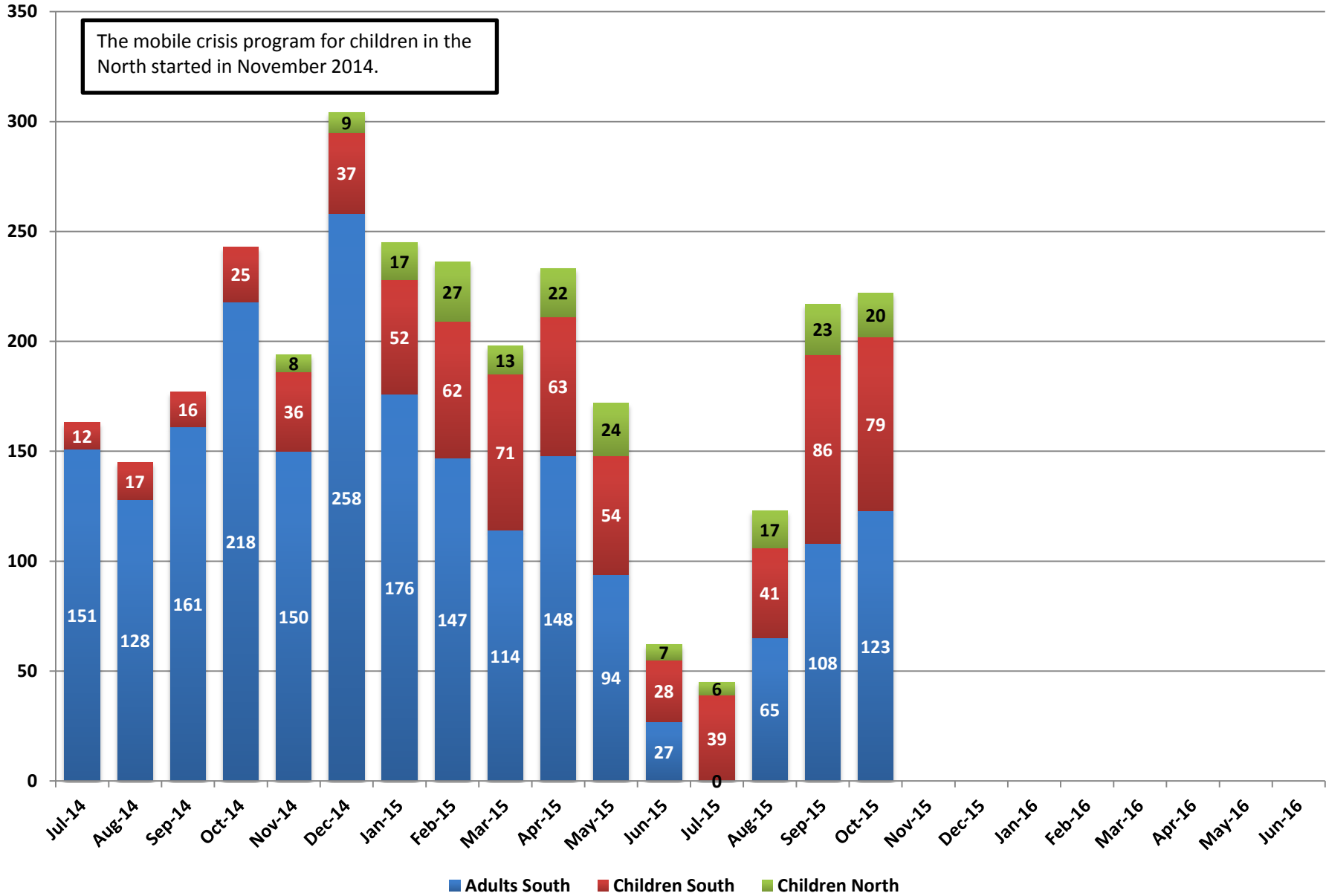
**Fiscal Year Averages**

Fiscal Year	Undocu-mented	Will assist to apply	Out-of-state Resident	Lost Benefits - will assist	Pending	Client states already applied	Client states will apply	Client refuses to apply	Unable to interview client
FY15	7%	8%	15%	9%	18%	13%	10%	14%	7%
FY16 to date	6%	2%	15%	5%	26%	11%	0%	25%	10%



## Mobile Crisis Clients Served

The mobile crisis program for children in the North started in November 2014.



### Children's Mobile Crisis

	Children South						Children North					
	Total Calls	Clients Served (Team Responded)	Hospitalization	Hospital Diversion	Stabilization Recommended	Hospital Diversion Rate	Total Calls	Clients Served (Team Responded)	Hospitalization	Hospital Diversion	Stabilization Recommended	Hospital Diversion Rate
Jul-14	15	12	3	9	9	75%						
Aug-14	20	17	1	16	9	94%						
Sep-14	32	16	0	16	9	100%						
Oct-14	37	25	0	25	23	100%						
Nov-14	50	36	3	33	28	92%	18	8	1	7	6	88%
Dec-14	57	37	4	33	27	89%	21	9	2	7	6	78%
Jan-15	60	52	5	47	43	90%	34	17	5	12	11	71%
Feb-15	71	62	12	50	42	81%	48	27	4	23	22	85%
Mar-15	95	71	12	59	51	83%	42	13	5	8	8	62%
Apr-15	104	63	6	57	37	90%	45	22	6	16	14	73%
May-15	90	54	6	48	26	89%	52	24	1	23	17	96%
Jun-15	38	28	3	25	19	89%	23	7	0	7	6	100%
Jul-15	51	39	9	30	12	77%	8	6	2	4	4	67%
Aug-15	53	41	3	38	26	93%	29	17	0	17	14	100%
Sep-15	122	86	10	76	52	88%	55	23	4	19	15	83%
Oct-15	121	79	6	73	56	92%	54	20	1	19	17	95%
Nov-15												
Dec-15												
Jan-16												
Feb-16												
Mar-16												
Apr-16												
May-16												
Jun-16												

Note: Children's Mobile Crisis Response Teams began in January 2014 in the South and November 2014 in the North.

## Mobile Crisis

	Adults South			
	Clients Served	Hospitalization	Hospital Diversion	Hospital Diversion Rate
Jul-14	151	50	101	67%
Aug-14	128	58	70	55%
Sep-14	161	79	82	51%
Oct-14	218	113	105	48%
Nov-14	150	85	65	43%
Dec-14	258	169	89	34%
Jan-15	176	116	61	35%
Feb-15	147	100	47	32%
Mar-15	114	73	41	36%
Apr-15	148	106	42	28%
May-15	94	64	30	32%
Jun-15	27	20	7	26%
Jul-15	0	0	0	
Aug-15	65	28	37	57%
Sep-15	108	46	62	57%
Oct-15	123	51	72	59%
Nov-15				
Dec-15				
Jan-16				
Feb-16				
Mar-16				
Apr-16				
May-16				
Jun-16				

	Total Clients Served			
	Adults South	Children South	Children North	Total
Jul-14	151	12		163
Aug-14	128	17		145
Sep-14	161	16		177
Oct-14	218	25		243
Nov-14	150	36	8	194
Dec-14	258	37	9	304
Jan-15	176	52	17	245
Feb-15	147	62	27	236
Mar-15	114	71	13	198
Apr-15	148	63	22	233
May-15	94	54	24	172
Jun-15	27	28	7	62
Jul-15	0	39	6	45
Aug-15	65	41	17	123
Sep-15	108	86	23	217
Oct-15	123	79	20	222
Nov-15				
Dec-15				
Jan-16				
Feb-16				
Mar-16				
Apr-16				
May-16				
Jun-16				

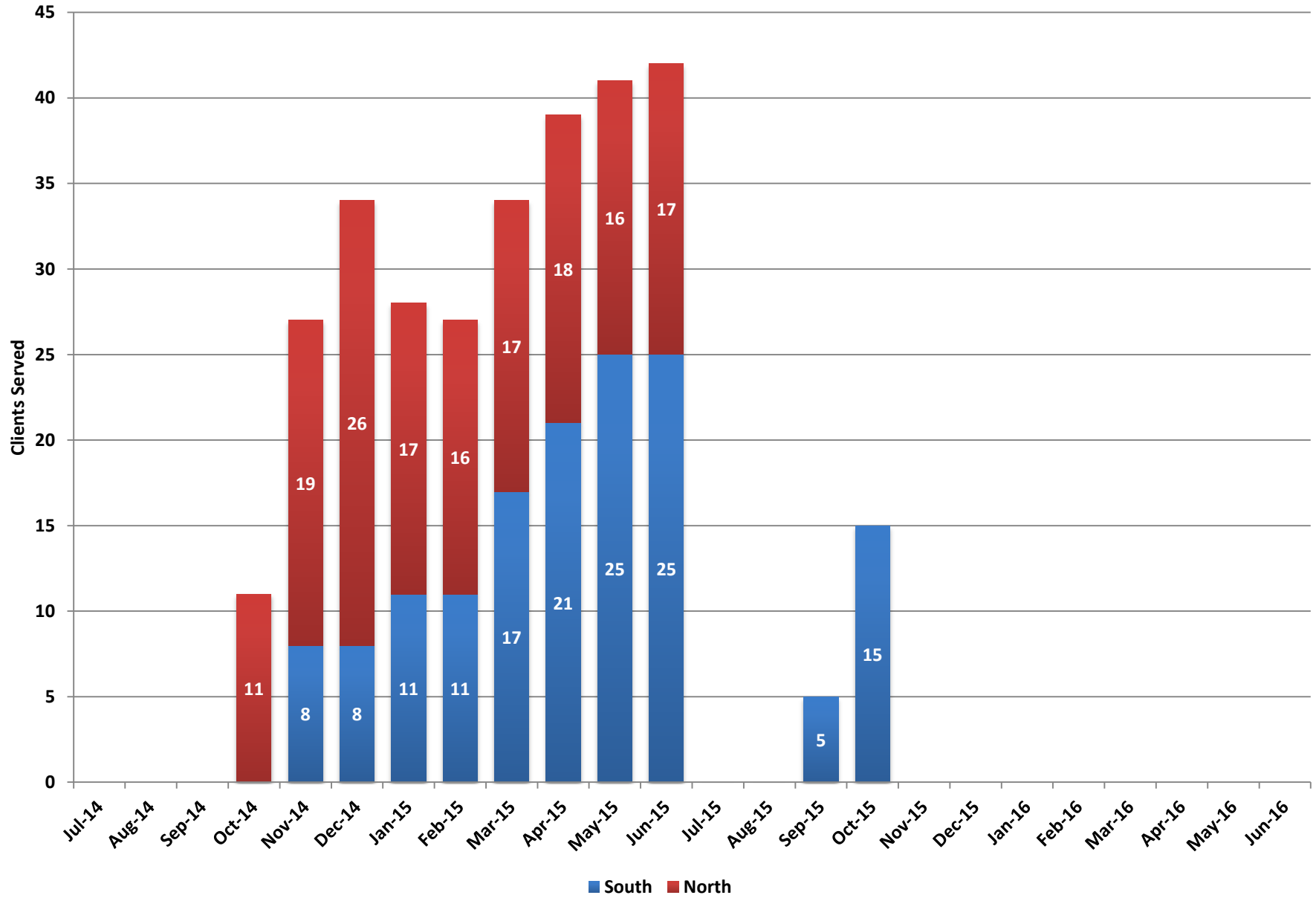
*Note: No adult mobile crisis staff were in the field in July 2015. DPBH and the social services department implemented a policy to serve on a triage basis. The staff will go to the ERs when the number of individuals without insurance exceeds 30 or when requested. They will also contact the ERs on all known individuals.*

### Fiscal Year Totals

Fiscal Year	Adults South		Children South		Children North		Total	
	Clients Served	Hospital Diversion Rate	Clients Served	Hospital Diversion Rate	Clients Served	Hospital Diversion Rate	Clients Served	Hospital Diversion Rate
FY14			96	90%				
FY15	1,772	42%	473	88%	127	81%	2,372	53%
FY16 to date	296	58%	245	88%	66	86%	607	74%

*Note: Adult South data is not available prior to July 2014. Children's Mobile Crisis Response Teams began in January 2014 in the South and November 2014 in the North.*

# Adult Home Visiting Program

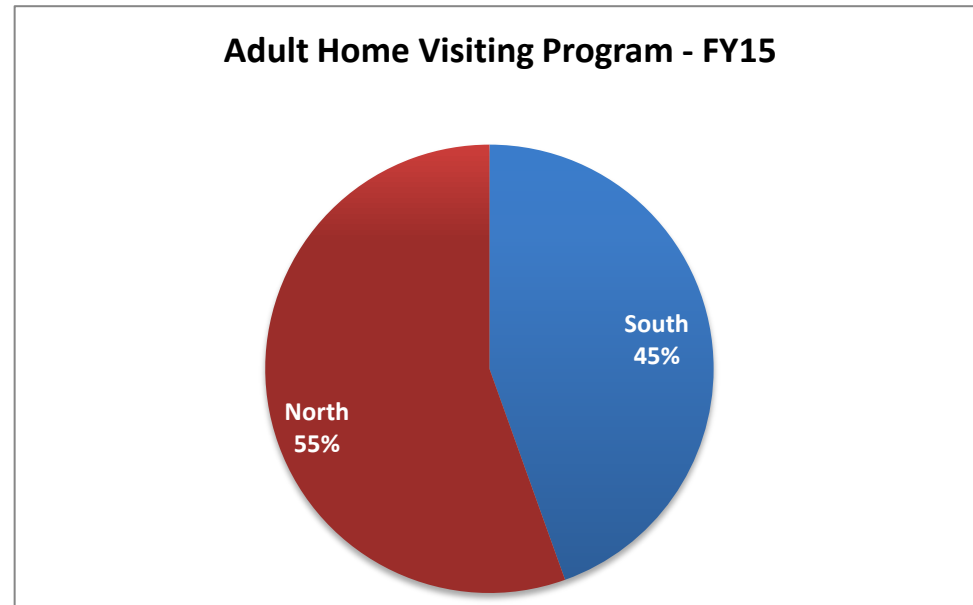


## Adult Home Visiting Program

	South	North	Total Served
Jul-14			
Aug-14			
Sep-14			
Oct-14	0	11	11
Nov-14	8	19	27
Dec-14	8	26	34
Jan-15	11	17	28
Feb-15	11	16	27
Mar-15	17	17	34
Apr-15	21	18	39
May-15	25	16	41
Jun-15	25	17	42
Jul-15	0		0
Aug-15	0		0
Sep-15	5		5
Oct-15	15		15
Nov-15			
Dec-15			
Jan-16			
Feb-16			
Mar-16			
Apr-16			
May-16			
Jun-16			

### Fiscal Year Averages

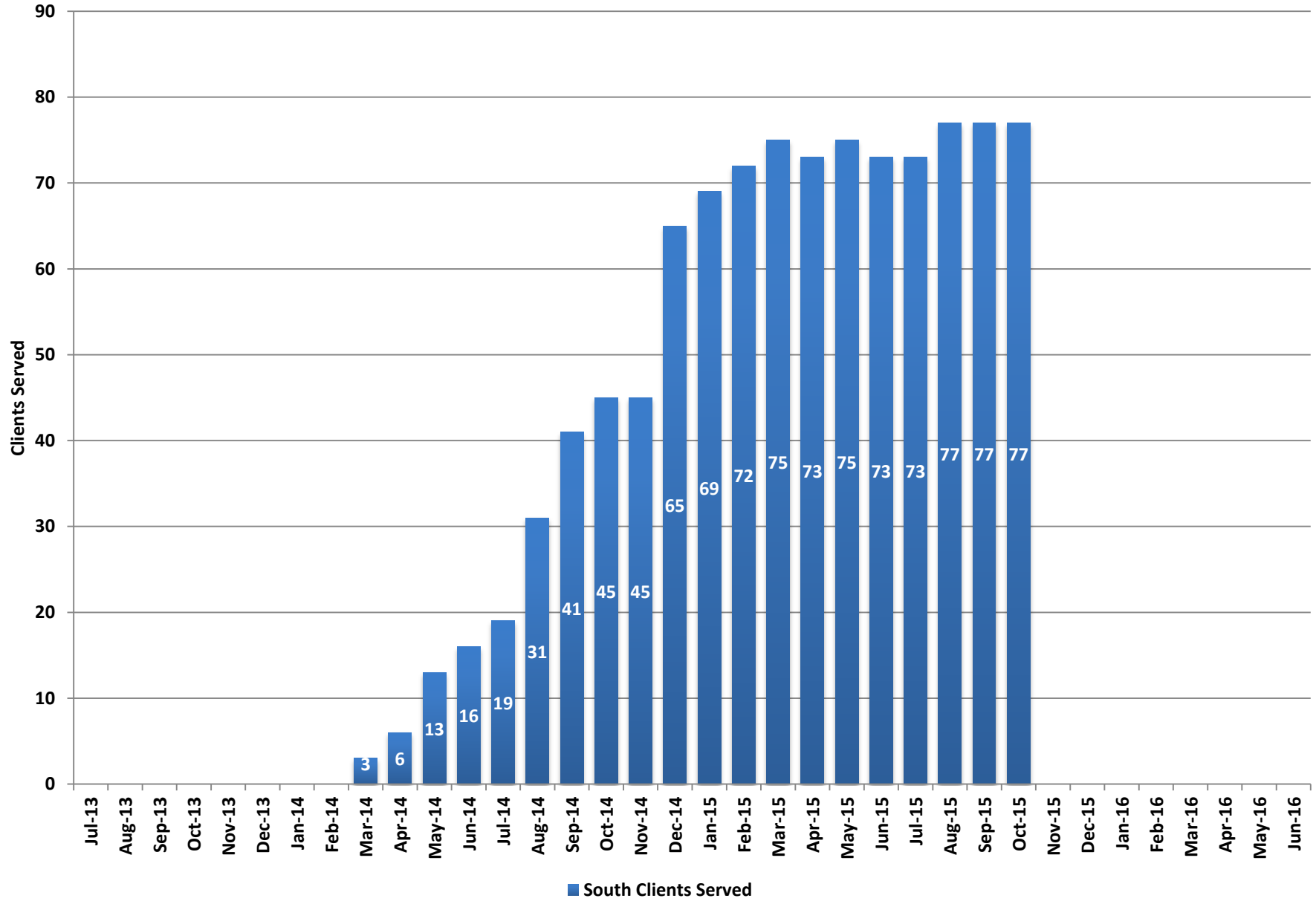
	South	North	Total Served
FY15	14	17	31
FY16 to date	5		



*Note: The contract ended June 30, 2015 because the services are Medicaid reimbursible. Two contracted staff have been approved for hire beginning in September, 2015 for home visitation in the South.*



### Adult Assisted Outpatient Treatment (AOT)



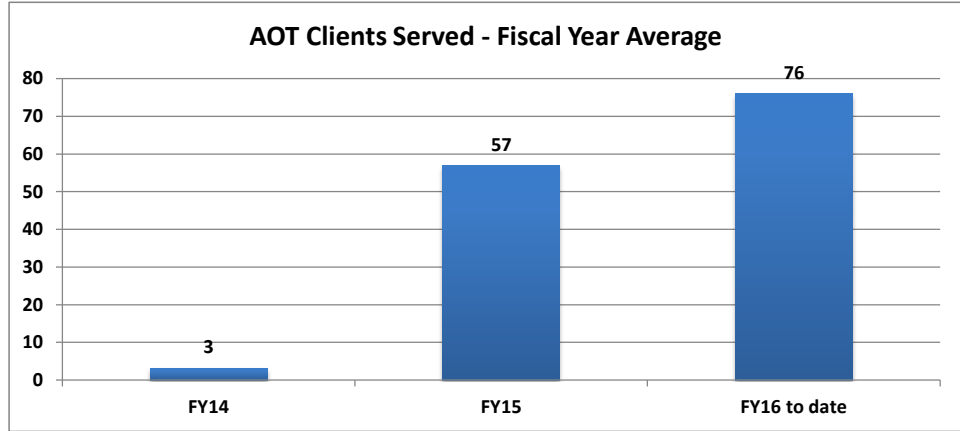
## Adult Assisted Outpatient Treatment (AOT)

	South Clients Served
Jul-13	0
Aug-13	0
Sep-13	0
Oct-13	0
Nov-13	0
Dec-13	0
Jan-14	0
Feb-14	0
Mar-14	3
Apr-14	6
May-14	13
Jun-14	16
Jul-14	19
Aug-14	31
Sep-14	41
Oct-14	45
Nov-14	45
Dec-14	65
Jan-15	69
Feb-15	72
Mar-15	75
Apr-15	73
May-15	75
Jun-15	73
Jul-15	73
Aug-15	77
Sep-15	77
Oct-15	77
Nov-15	
Dec-15	
Jan-16	
Feb-16	
Mar-16	
Apr-16	
May-16	
Jun-16	

### Fiscal Year Average

Fiscal Year	South Clients Served
FY14	3
FY15	57
FY16 to date	76

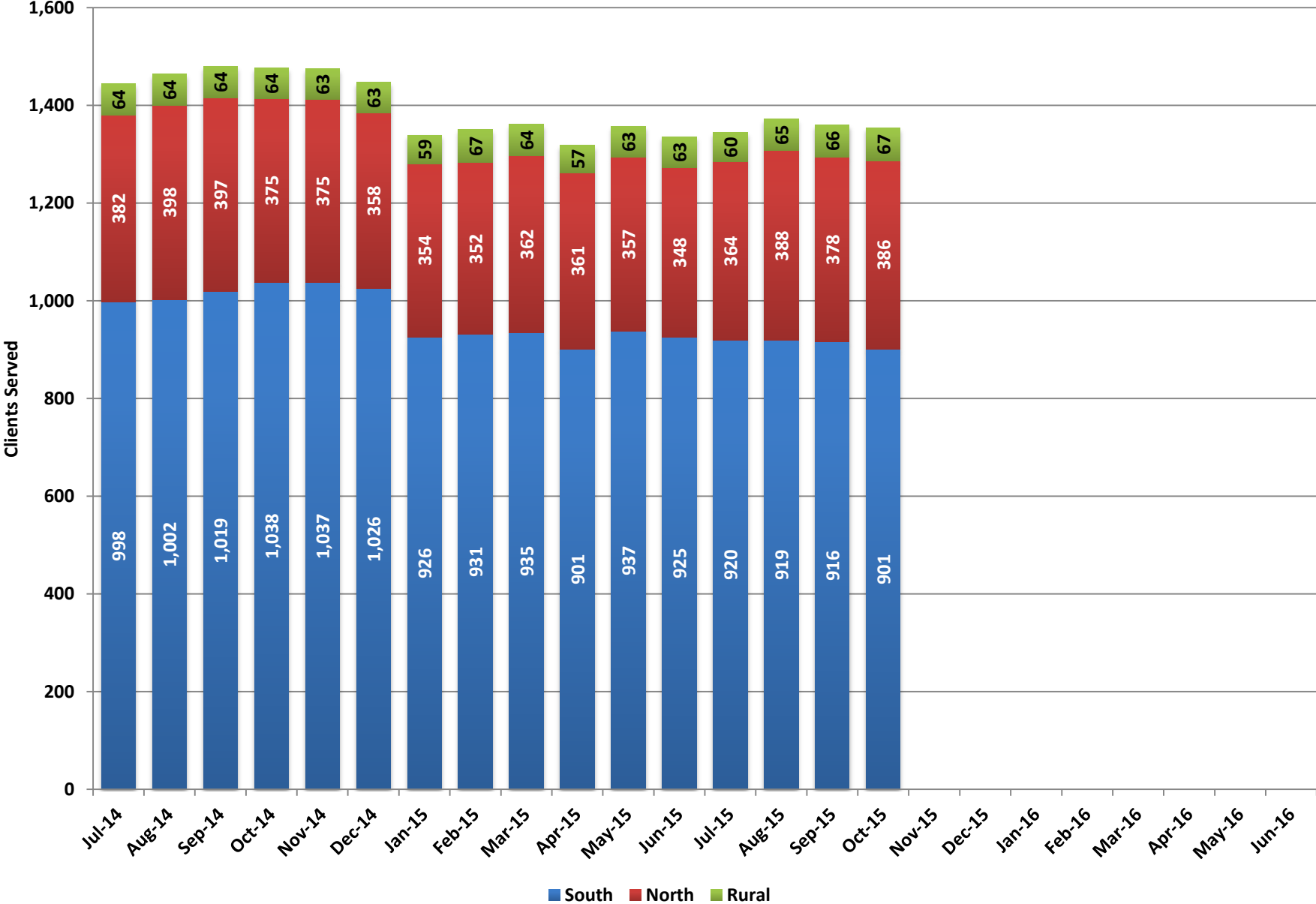
Note: Budgeted caseload is 75 clients.



### AOT Clients by Status

	Referrals	Petitions	Court Orders	Re-petitions	Denied by AOT	Denied by Court	Terminated by Court	Graduated
Feb-15	16	5	5	6	12	0	2	0
Mar-15	12	5	5	8	6	0	0	2
Apr-15	10	5	4	7	9	0	5	1
May-15	8	4	4	1	4	0	2	2
Jun-15	15	7	6	17	4	1	2	0
Jul-15	6	5	6	9	5	1	0	0
Aug-15	11	2	2	7	3	3	3	2
Sep-15	11	2	9	8	5	0	1	3
Oct-15	10	4	1	5	4	0	1	5
Nov-15								
Dec-15								
Jan-16								
Feb-16								
Mar-16								
Apr-16								
May-16								
Jun-16								

### Adult Housing Support by Region

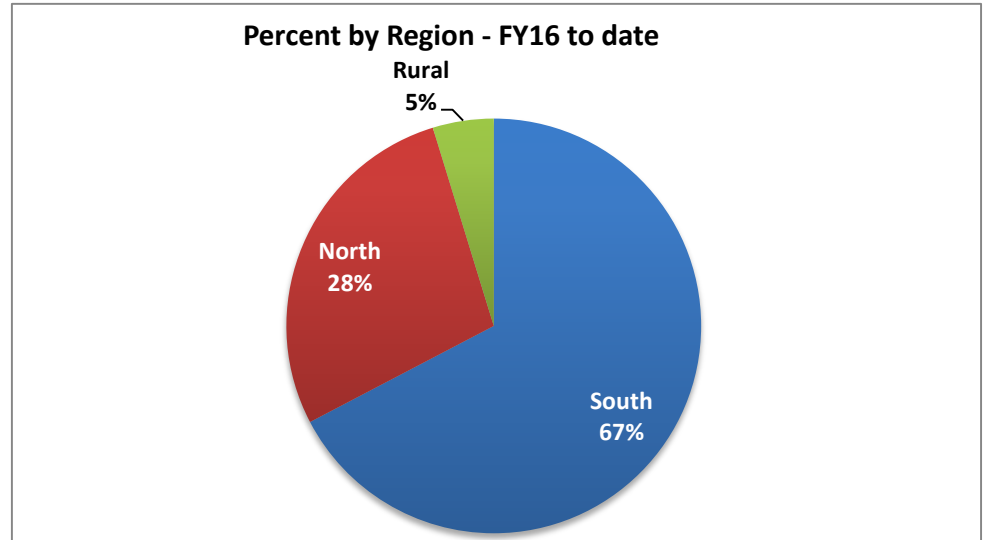


## Adult Housing Support by Region

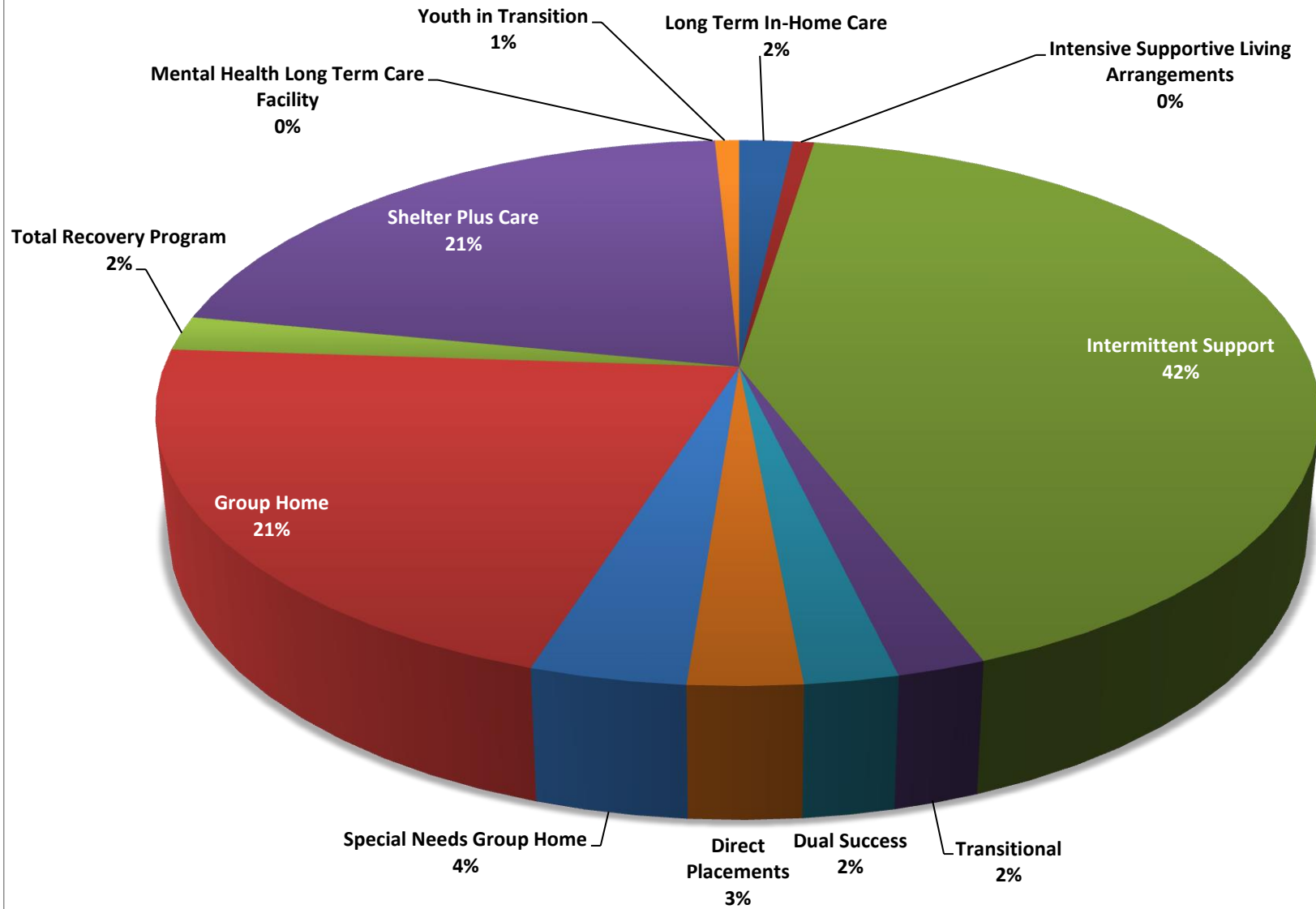
	South	North	Rural	Total Served
Jul-14	998	382	64	1,444
Aug-14	1,002	398	64	1,464
Sep-14	1,019	397	64	1,480
Oct-14	1,038	375	64	1,477
Nov-14	1,037	375	63	1,475
Dec-14	1,026	358	63	1,447
Jan-15	926	354	59	1,339
Feb-15	931	352	67	1,350
Mar-15	935	362	64	1,361
Apr-15	901	361	57	1,319
May-15	937	357	63	1,357
Jun-15	925	348	63	1,336
Jul-15	920	364	60	1,344
Aug-15	919	388	65	1,372
Sep-15	916	378	66	1,360
Oct-15	901	386	67	1,354
Nov-15				
Dec-15				
Jan-16				
Feb-16				
Mar-16				
Apr-16				
May-16				
Jun-16				

### *Fiscal Year Averages*

Fiscal Year	South	North	Rural	Total Served
FY15	973	368	63	1,404
FY16 to date	914	379	65	1,358



### Adult Housing Support by Type - FY16 to date



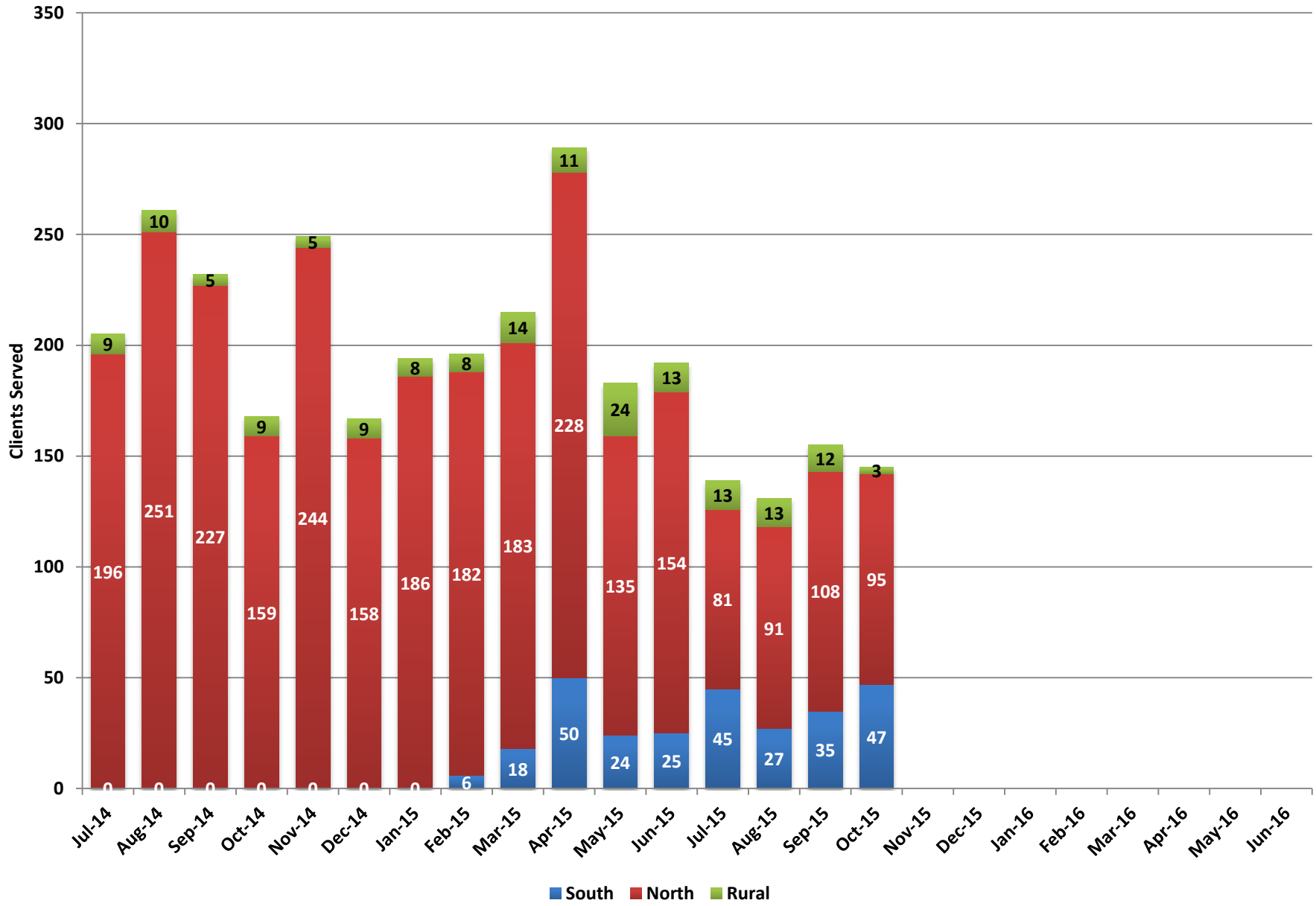
### Housing Support by Type

	Long Term In-Home Care	Intensive Supportive Living Arrangements	Intermittent Support	Transitional	Dual Success	Direct Placements	Special Needs Group Home	Group Home	Total Recovery Program	Shelter Plus Care	Mental Health Long Term Care Facility	Youth in Transition
Jul-14	0	13	552	40	30	128	52	305	44	276	0	4
Aug-14	0	13	569	42	30	124	52	304	41	284	0	5
Sep-14	0	15	578	45	33	119	52	309	40	283	0	6
Oct-14	28	16	567	36	37	122	53	291	40	280	0	7
Nov-14	28	13	574	34	37	119	52	294	45	272	0	7
Dec-14	27	12	559	31	31	120	52	293	44	271	0	7
Jan-15	26	12	557	15	33	39	52	290	46	262	0	7
Feb-15	28	11	566	25	30	39	52	286	42	265	0	6
Mar-15	25	11	573	27	31	35	51	291	49	259	0	9
Apr-15	25	13	562	33	34	12	51	284	39	256	0	10
May-15	24	11	561	33	31	41	51	288	39	268	0	10
Jun-15	18	10	558	32	29	38	51	286	36	269	0	9
Jul-15	24	11	564	25	29	38	51	288	29	275	0	10
Aug-15	24	10	581	29	29	37	50	286	26	289	0	11
Sep-15	24	9	568	30	31	38	50	284	28	287	0	11
Oct-15	23	7	554	30	32	34	50	290	28	295	0	11
Nov-15												
Dec-15												
Jan-16												
Feb-16												
Mar-16												
Apr-16												
May-16												
Jun-16												

#### Fiscal Year Averages

Fiscal Year	Long Term In-Home Care	Intensive Supportive Living Arrangements	Intermittent Support	Transitional	Dual Success	Direct Placements	Special Needs Group Home	Group Home	Total Recovery Program	Shelter Plus Care	Mental Health Long Term Care Facility	Youth in Transition
FY15	19	13	565	33	32	78	52	293	42	270	0	7
FY16 to date	24	9	567	29	30	37	50	287	28	287	0	11

# MOST

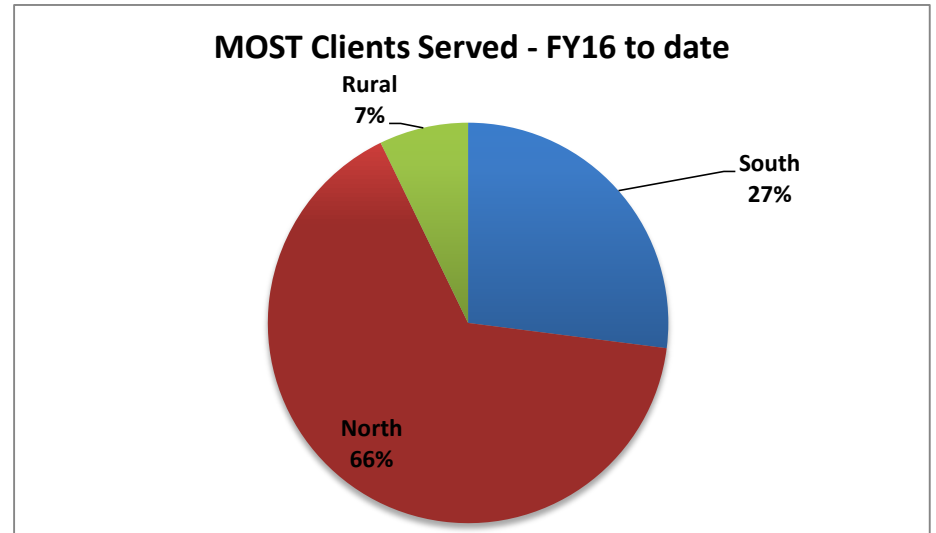


## MOST Clients Served

	South	North	Rural	Total
Jul-14	0	196	9	205
Aug-14	0	251	10	261
Sep-14	0	227	5	232
Oct-14	0	159	9	168
Nov-14	0	244	5	249
Dec-14	0	158	9	167
Jan-15	0	186	8	194
Feb-15	6	182	8	196
Mar-15	18	183	14	215
Apr-15	50	228	11	289
May-15	24	135	24	183
Jun-15	25	154	13	192
Jul-15	45	81	13	139
Aug-15	27	91	13	131
Sep-15	35	108	12	155
Oct-15	47	95	3	145
Nov-15				
Dec-15				
Jan-16				
Feb-16				
Mar-16				
Apr-16				
May-16				
Jun-16				

### Fiscal Year Averages

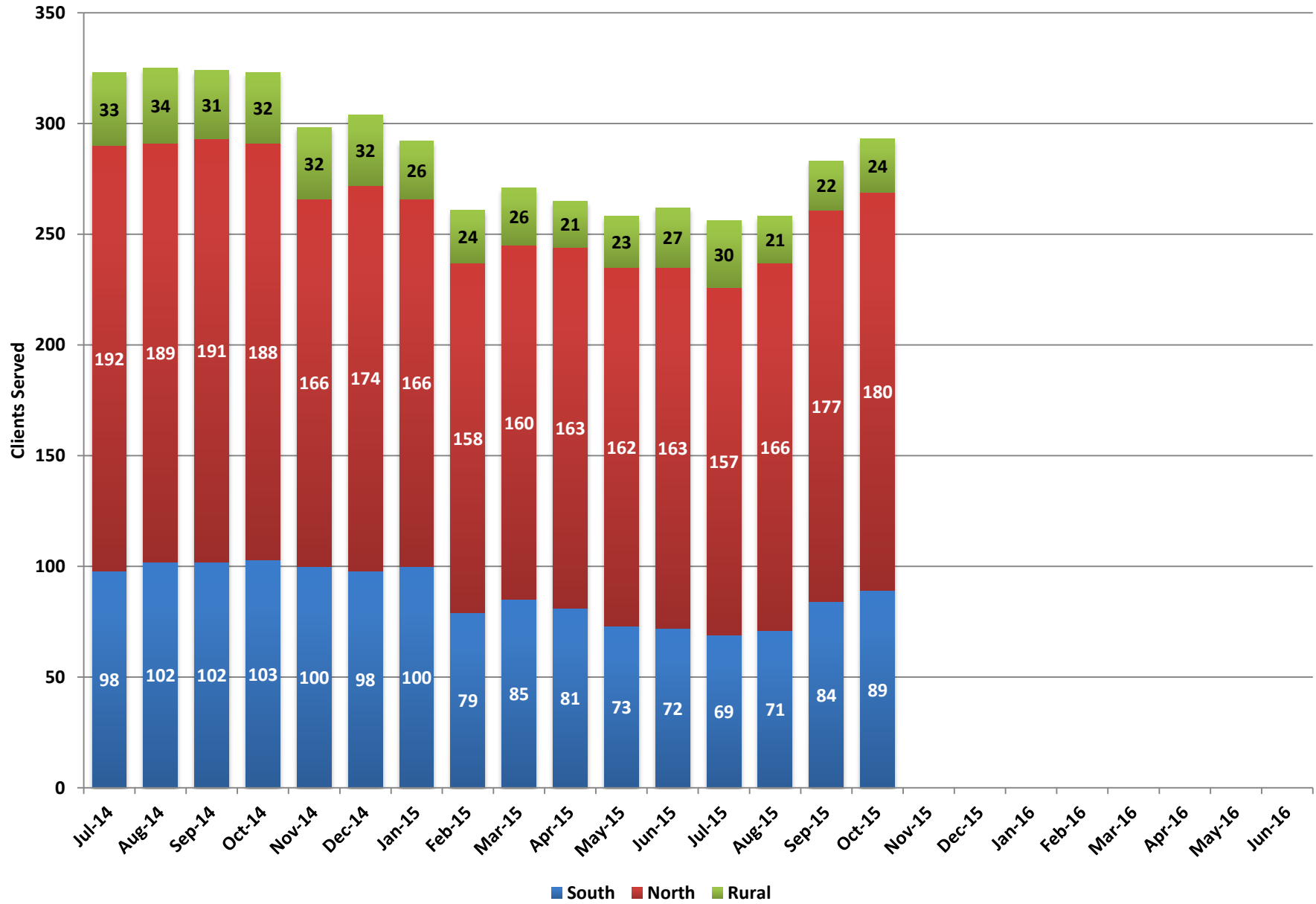
Fiscal Year	South	North	Rural	Total
FY15	10	192	10	213
FY16 to date	39	94	10	143



Note: Beginning in September 2015, the data for the Rural region now includes Lyon County in addition to Carson City.



# Mental Health Court

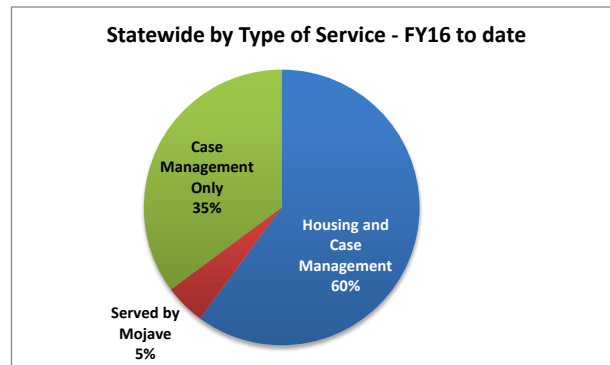


### Adult Mental Health Court

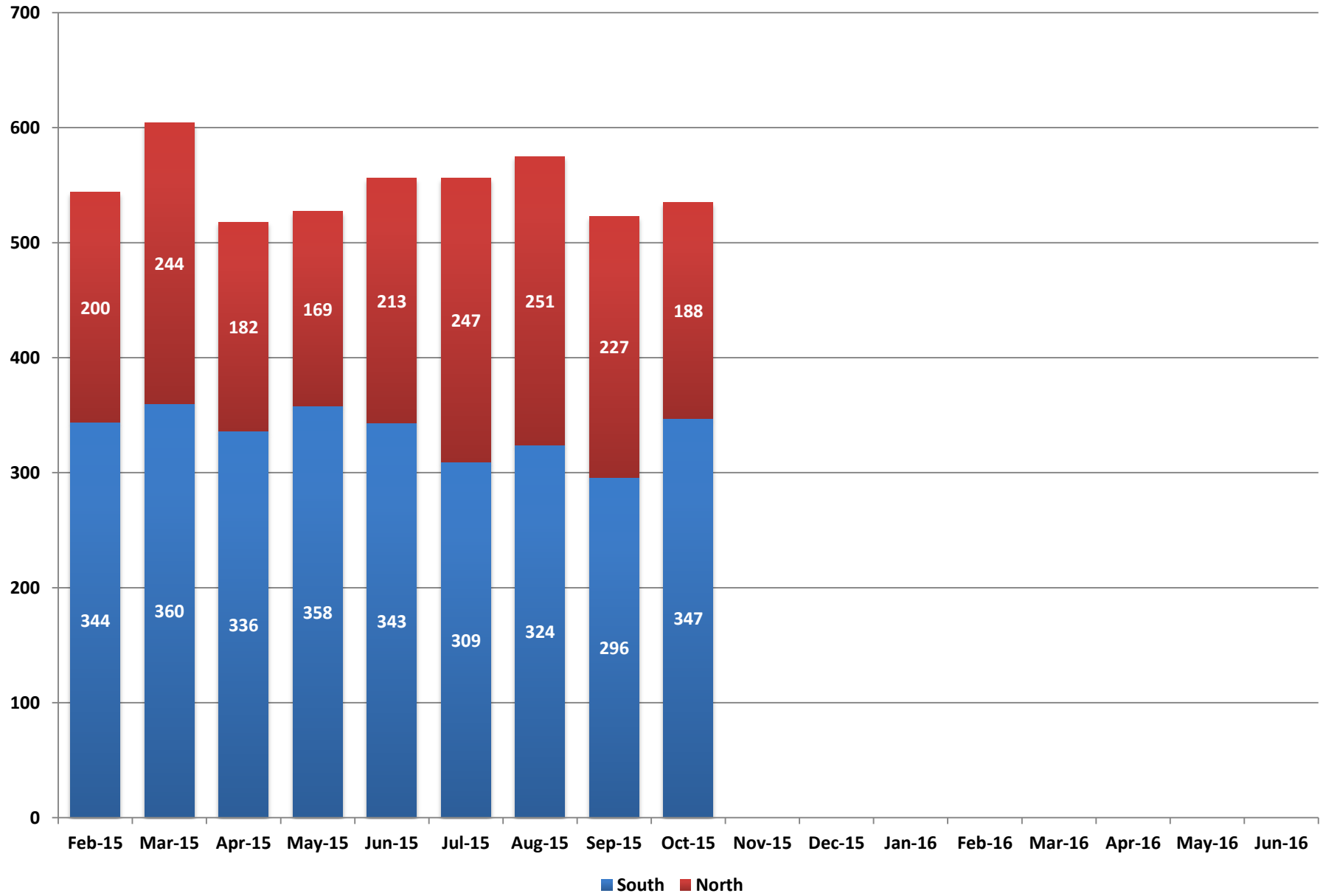
	South				North				Rural				Statewide			
	Housing and Case Management	Served by Mojave	Case Management Only	Total	Housing and Case Management	Served by Mojave	Case Management Only	Total	Housing and Case Management	Served by Mojave	Case Management Only	Total	Housing and Case Management	Served by Mojave	Case Management Only	Total Clients Served
Jul-14	72	25	1	98	80	1	111	192	33		0	33	185	26	112	323
Aug-14	74	25	3	102	85	1	103	189	34		0	34	193	26	106	325
Sep-14	74	25	3	102	81	1	109	191	31		0	31	186	26	112	324
Oct-14	78	20	5	103	83	1	104	188	32		0	32	193	21	109	323
Nov-14	79	12	9	100	64	1	101	166	32		0	32	175	13	110	298
Dec-14	75	18	5	98	67	1	106	174	32		0	32	174	19	111	304
Jan-15	77	18	5	100	73	1	92	166	26		0	26	176	19	97	292
Feb-15	65	10	4	79	75	1	82	158	24		0	24	164	11	86	261
Mar-15	69	12	4	85	76	1	83	160	26		0	26	171	13	87	271
Apr-15	64	12	5	81	68	1	94	163	21		0	21	153	13	99	265
May-15	60	13	0	73	77	0	85	162	23		0	23	160	13	85	258
Jun-15	59	13	0	72	72	0	91	163	27		0	27	158	13	91	262
Jul-15	59	10	0	69	80	1	76	157	30		0	30	169	11	76	256
Aug-15	59	12	0	71	73	0	93	166	21		0	21	153	12	93	258
Sep-15	57	12	15	84	85	2	90	177	22		0	22	164	14	105	283
Oct-15	59	15	15	89	86	0	94	180	24		0	24	169	15	109	293
Nov-15																
Dec-15																
Jan-16																
Feb-16																
Mar-16																
Apr-16																
May-16																
Jun-16																

#### Fiscal Year Averages

Fiscal Year	South				North				Rural				Statewide			
	Housing and Case Management	Served by Mojave	Case Management Only	Total	Housing and Case Management	Served by Mojave	Case Management Only	Total	Housing and Case Management	Served by Mojave	Case Management Only	Total	Housing and Case Management	Served by Mojave	Case Management Only	Total Clients Served
FY15	71	17	4	91	75	1	97	173	28		0	28	174	18	100	292
FY16 to date	59	12	8	78	81	1	88	170	24		0	24	164	13	96	273



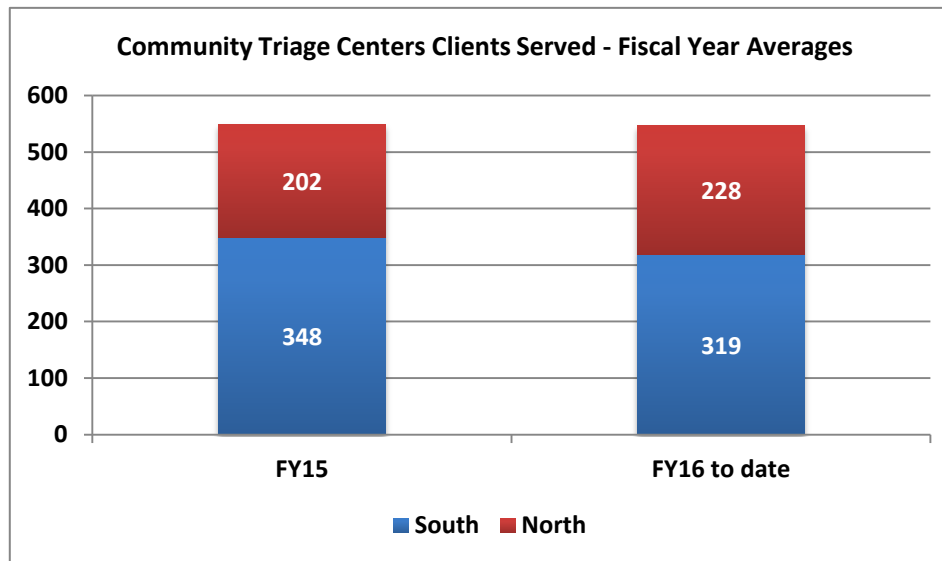
### Adult Community Triage Centers - Clients Served



## Adult Community Triage Centers

### Clients Served (Unduplicated)

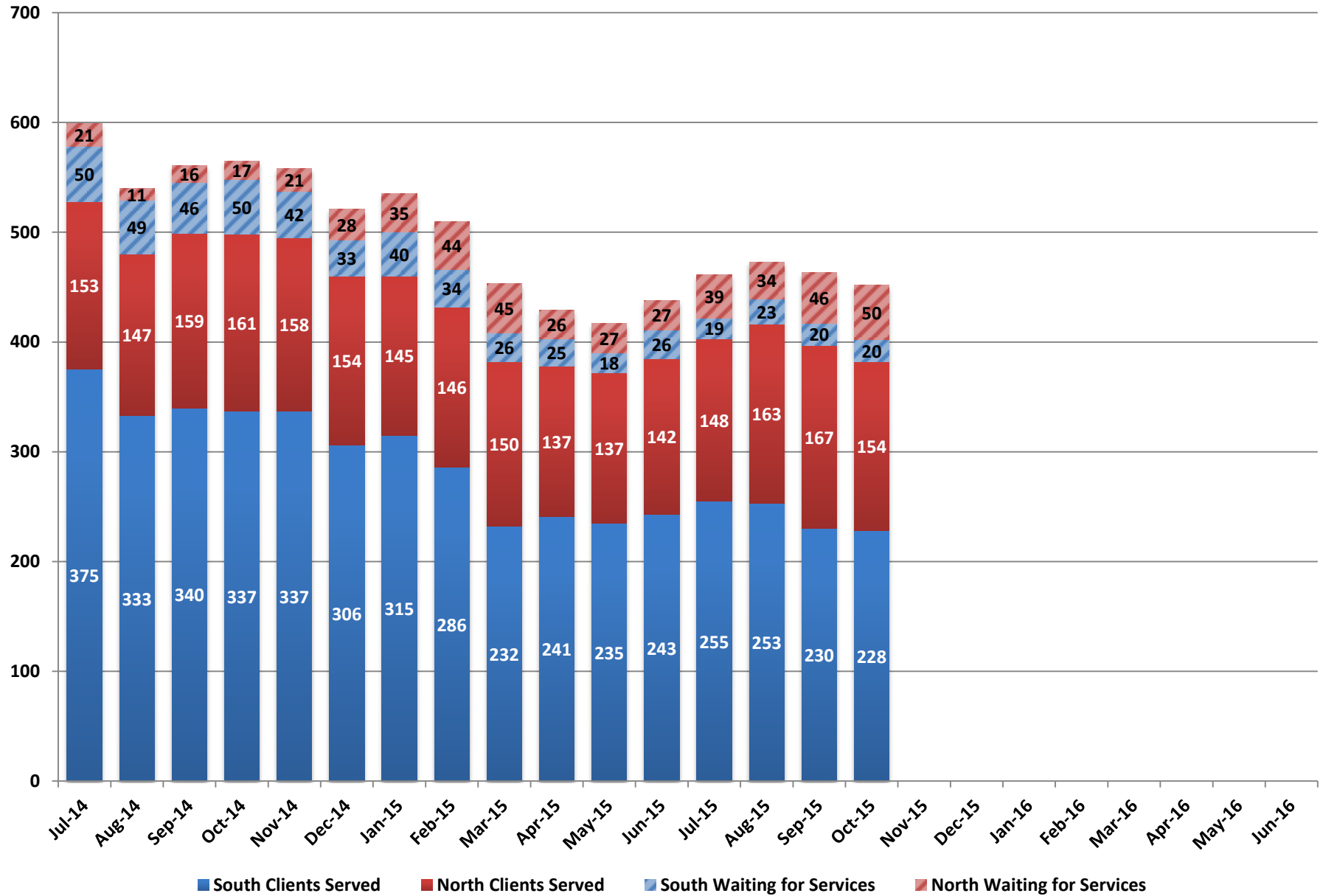
	South	North	Total
Feb-15	344	200	544
Mar-15	360	244	604
Apr-15	336	182	518
May-15	358	169	527
Jun-15	343	213	556
Jul-15	309	247	556
Aug-15	324	251	575
Sep-15	296	227	523
Oct-15	347	188	535
Nov-15			
Dec-15			
Jan-16			
Feb-16			
Mar-16			
Apr-16			
May-16			
Jun-16			



### Fiscal Year Averages

	South	North	Total
FY15	348	202	550
FY16 to date	319	228	547

## Early Childhood Mental Health Services

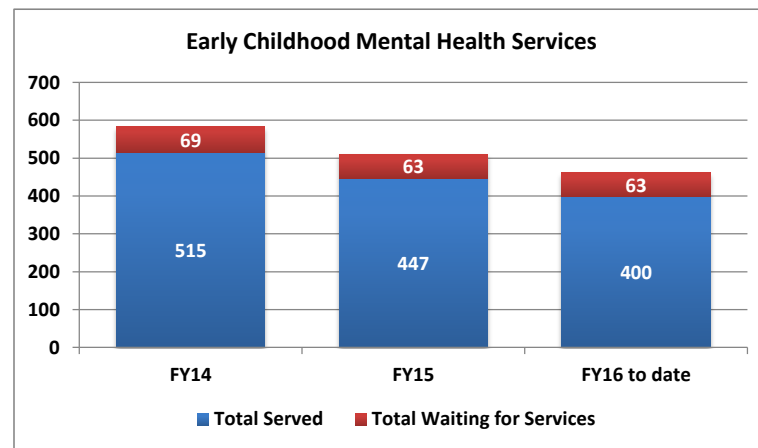


### Early Childhood Mental Health Services

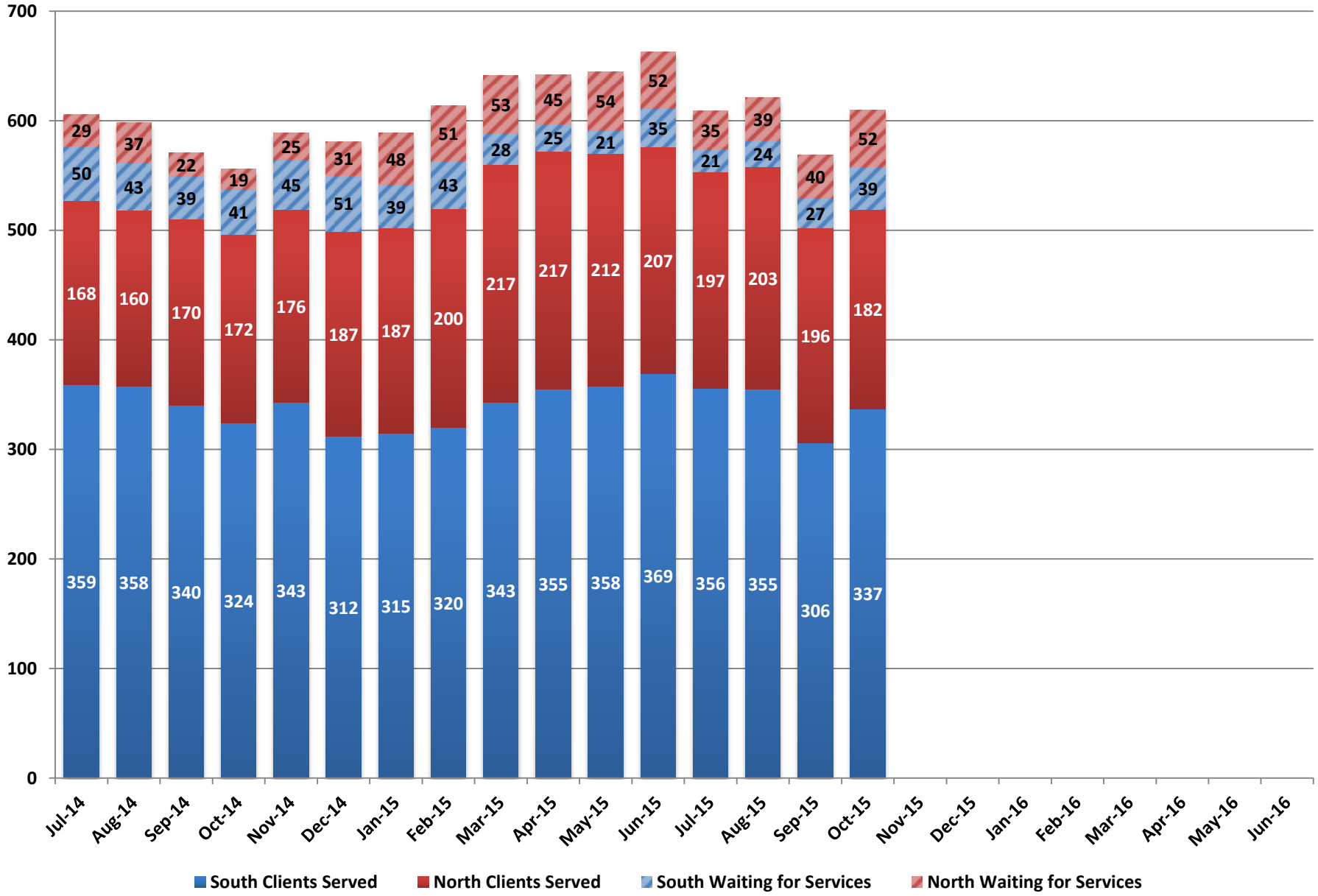
	South		North		Total	
	South Clients Served	South Waiting for Services	North Clients Served	North Waiting for Services	Total Served	Total Waiting for Services
Jul-14	375	50	153	21	528	71
Aug-14	333	49	147	11	480	60
Sep-14	340	46	159	16	499	62
Oct-14	337	50	161	17	498	67
Nov-14	337	42	158	21	495	63
Dec-14	306	33	154	28	460	61
Jan-15	315	40	145	35	460	75
Feb-15	286	34	146	44	432	78
Mar-15	232	26	150	45	382	71
Apr-15	241	25	137	26	378	51
May-15	235	18	137	27	372	45
Jun-15	243	26	142	27	385	53
Jul-15	255	19	148	39	403	58
Aug-15	253	23	163	34	416	57
Sep-15	230	20	167	46	397	66
Oct-15	228	20	154	50	382	70
Nov-15						
Dec-15						
Jan-16						
Feb-16						
Mar-16						
Apr-16						
May-16						
Jun-16						

**Fiscal Year Averages**

Fiscal Year	South Clients Served	South Waiting for Services	North Clients Served	North Waiting for Services	Total Served	Total Waiting for Services
FY14	351	45	164	24	515	69
FY15	298	37	149	27	447	63
FY16 to date	242	21	158	42	400	63



### Children's Clinical Services/Outpatient

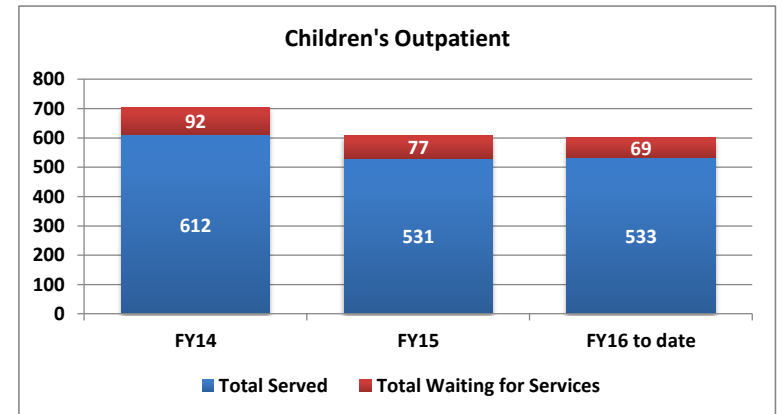


## Children's Clinical Services/Outpatient

	South Clients Served	South Waiting for Services	North Clients Served	North Waiting for Services	Total Served	Total Waiting for Services
Jul-14	359	50	168	29	527	79
Aug-14	358	43	160	37	518	80
Sep-14	340	39	170	22	510	61
Oct-14	324	41	172	19	496	60
Nov-14	343	45	176	25	519	70
Dec-14	312	51	187	31	499	82
Jan-15	315	39	187	48	502	87
Feb-15	320	43	200	51	520	94
Mar-15	343	28	217	53	560	81
Apr-15	355	25	217	45	572	70
May-15	358	21	212	54	570	75
Jun-15	369	35	207	52	576	87
Jul-15	356	21	197	35	553	56
Aug-15	355	24	203	39	558	63
Sep-15	306	27	196	40	502	67
Oct-15	337	39	182	52	519	91
Nov-15						
Dec-15						
Jan-16						
Feb-16						
Mar-16						
Apr-16						
May-16						
Jun-16						

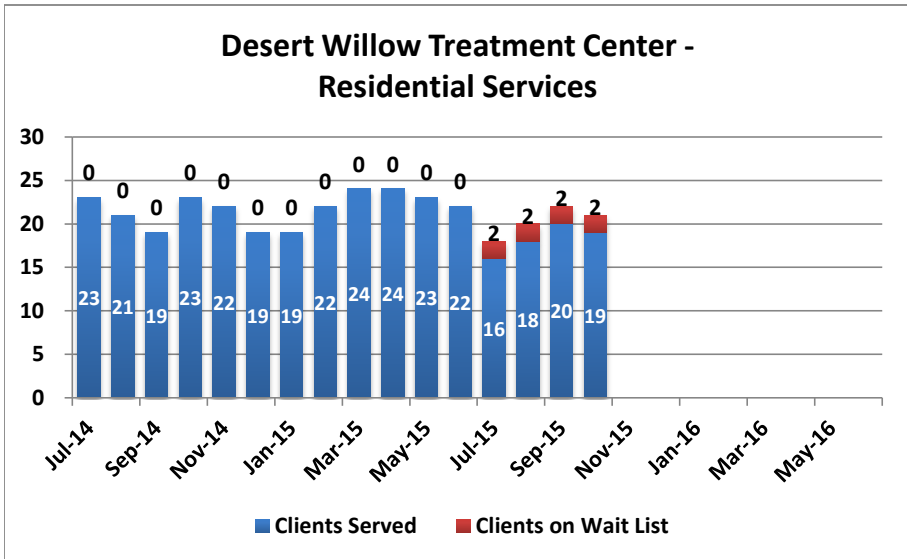
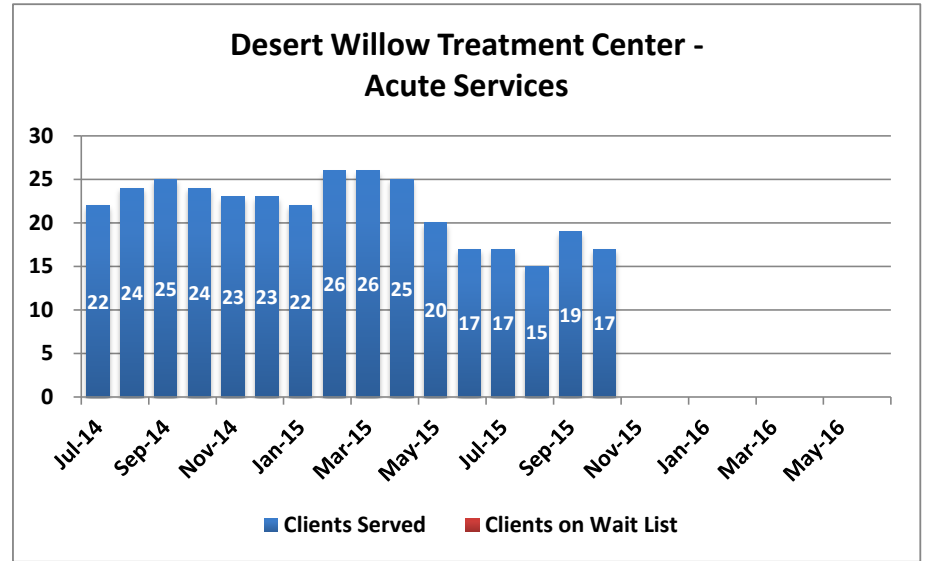
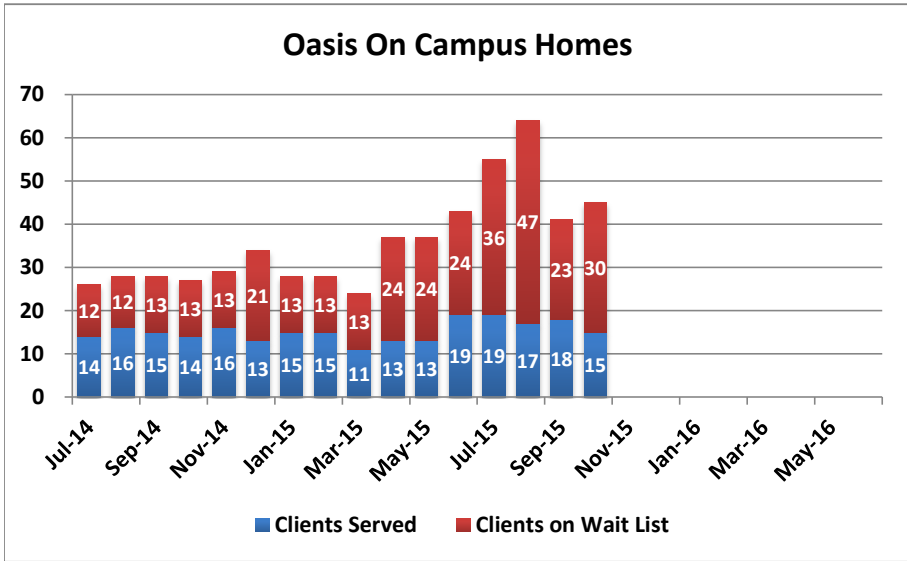
### Fiscal Year Averages

Fiscal Year	South Clients Served	South Waiting for Services	North Clients Served	North Waiting for Services	Total Served	Total Waiting for Services
FY14	398	65	214	27	612	92
FY15	341	38	189	39	531	77
FY16 to date	339	28	195	42	533	69





# Children's Mental Health - South



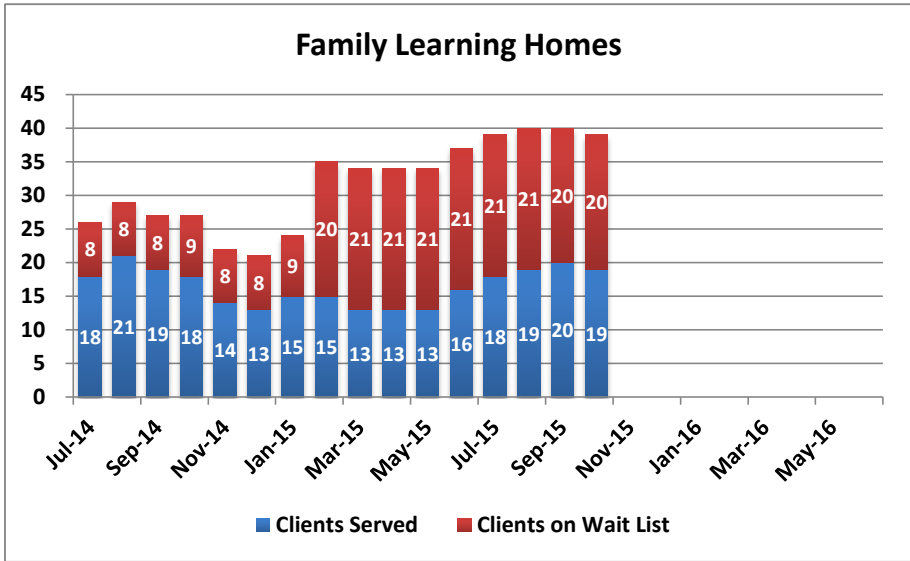
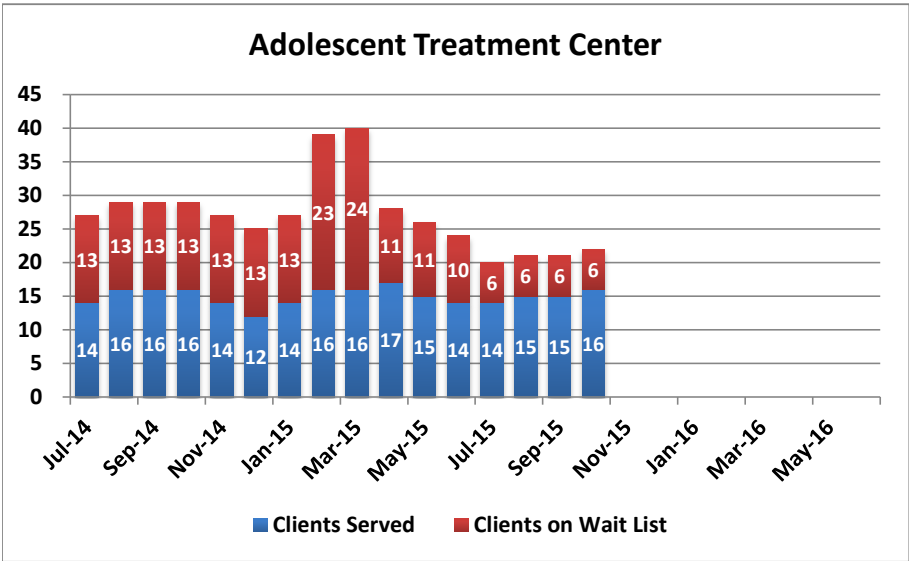
### Children's Mental Health - South

	Oasis On Campus Homes			Desert Willow Treatment Center - Acute Services			Desert Willow Treatment Center - Residential Services		
	Clients Served	Clients on Wait List	Average Length of Stay	Clients Served	Clients on Wait List	Average Length of Stay	Clients Served	Clients on Wait List	Average Length of Stay
Jul-14	14	12	160	22	0	76	23	0	81
Aug-14	16	12	118	24	0	85	21	0	103
Sep-14	15	13	83	25	0	66	19	0	91
Oct-14	14	13	79	24	0	86	23	0	75
Nov-14	16	13	97	23	0	94	22	0	70
Dec-14	13	21	99	23	0	98	19	0	87
Jan-15	15	13	111	22	0	95	19	0	99
Feb-15	15	13	97	26	0	93	22	0	96
Mar-15	11	13	114	26	0	112	24	0	103
Apr-15	13	24	102	25	0	114	24	0	91
May-15	13	24	130	20	0	146	23	0	92
Jun-15	19	24	98	17	0	128	22	0	91
Jul-15	19	36	105	17	0	116	16	2	96
Aug-15	17	47	101	15	0	115	18	2	82
Sep-15	18	23	101	19	0	45	20	2	98
Oct-15	15	30	111	17	0	66	19	2	103
Nov-15									
Dec-15									
Jan-16									
Feb-16									
Mar-16									
Apr-16									
May-16									
Jun-16									

***Fiscal Year Averages***

Fiscal Year	Oasis On Campus Homes			Desert Willow Treatment Center - Acute Services			Desert Willow Treatment Center - Residential Services		
	Clients Served	Clients on Wait List	Average Length of Stay	Clients Served	Clients on Wait List	Average Length of Stay	Clients Served	Clients on Wait List	Average Length of Stay
FY14	13	28	156	21	0	71	23	0	81
FY15	15	16	107	23	0	99	22	0	90
FY16 to date	17	34	104	17	0	85	18	2	95

# Children's Mental Health - North



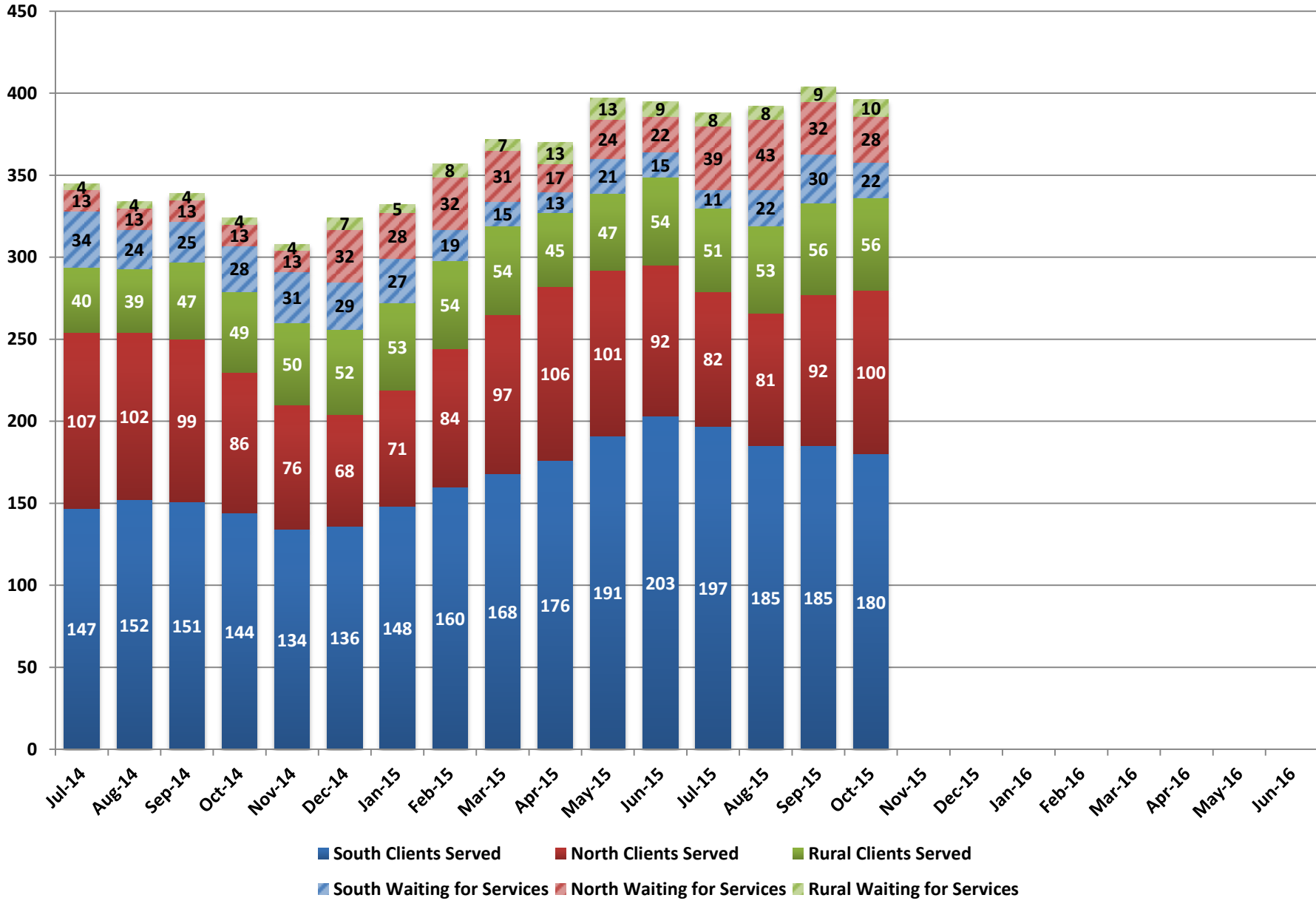
### Children's Mental Health - North

	Adolescent Treatment Center			Family Learning Homes		
	Clients Served	Clients on Wait List	Average Length of Stay	Clients Served	Clients on Wait List	Average Length of Stay
Jul-14	14	13	88	18	8	61
Aug-14	16	13	74	21	8	61
Sep-14	16	13	104	19	8	76
Oct-14	16	13	102	18	9	105
Nov-14	14	13	122	14	8	122
Dec-14	12	13	95	13	8	104
Jan-15	14	13	84	15	9	96
Feb-15	16	23	62	15	20	104
Mar-15	16	24	71	13	21	82
Apr-15	17	11	97	13	21	82
May-15	15	11	116	13	21	97
Jun-15	14	10	104	16	21	61
Jul-15	14	6	92	18	21	74
Aug-15	15	6	59	19	21	67
Sep-15	15	6	68	20	20	93
Oct-15	16	6	94	19	20	106
Nov-15						
Dec-15						
Jan-16						
Feb-16						
Mar-16						
Apr-16						
May-16						
Jun-16						

***Fiscal Year Averages***

Fiscal Year	Adolescent Treatment Center			Family Learning Homes		
	Clients Served	Clients on Wait List	Average Length of Stay	Clients Served	Clients on Wait List	Average Length of Stay
FY14	15	21	87	18	14	95
FY15	15	14	93	16	14	87
FY16 to date	15	6	78	19	21	85

### Children's Wraparound in Nevada (WIN)



### Children's Wraparound in Nevada (WIN)

	South Clients Served	South Waiting for Services	North Clients Served	North Waiting for Services	Rural Clients Served	Rural Waiting for Services	Total Served	Total Waiting for Services
Jul-14	147	34	107	13	40	4	294	51
Aug-14	152	24	102	13	39	4	293	41
Sep-14	151	25	99	13	47	4	297	42
Oct-14	144	28	86	13	49	4	279	45
Nov-14	134	31	76	13	50	4	260	48
Dec-14	136	29	68	32	52	7	256	68
Jan-15	148	27	71	28	53	5	272	60
Feb-15	160	19	84	32	54	8	298	59
Mar-15	168	15	97	31	54	7	319	53
Apr-15	176	13	106	17	45	13	327	43
May-15	191	21	101	24	47	13	339	58
Jun-15	203	15	92	22	54	9	349	46
Jul-15	197	11	82	39	51	8	330	58
Aug-15	185	22	81	43	53	8	319	73
Sep-15	185	30	92	32	56	9	333	71
Oct-15	180	22	100	28	56	10	336	60
Nov-15								
Dec-15								
Jan-16								
Feb-16								
Mar-16								
Apr-16								
May-16								
Jun-16								

***Fiscal Year Averages***

Fiscal Year	South Clients Served	South Waiting for Services	North Clients Served	North Waiting for Services	Rural Clients Served	Rural Waiting for Services	Total Served	Total Waiting for Services
FY14	170	36	98	15	45	5	312	51
FY15	159	25	92	20	48	7	299	52
FY16 to date	187	21	89	36	54	9	330	66